

## Loading a Photo on the Display of F3400/F5400/F7010/F7510 Radios

### Introduction

This procedure describes how to put a photo on the Display of your radio that will appear at power-up.

### Prerequisites

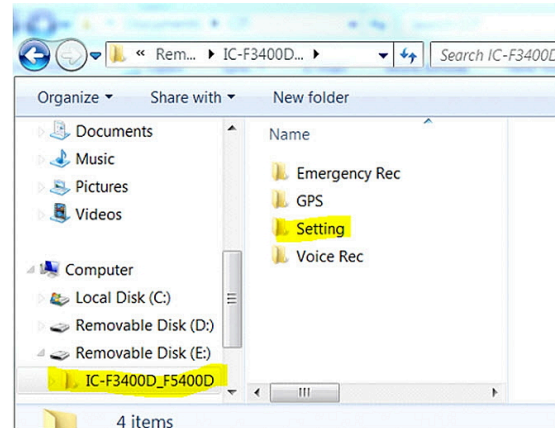
- Software/Firmware upgraded to latest
- USB cable (A - micro B type)
- Micro SD card formatted (radio Function -> SD Card -> SD Format menu) and installed in the radio
- Photo exactly 318 x 148 (mobile) or 294 x 220 (portable) bmp format.

### Procedure

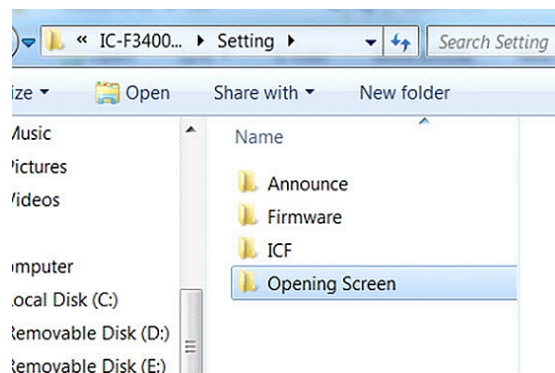
1. Open your photo in MS Paint or similar photo editing software and adjust to the dimensions listed in the *Prerequisites*. The dimensions must be exact to be successful.
2. Save the file as a .bmp format to your desktop. It must be named exactly as: Portable.bmp or Mobile.bmp\* (Note Initial caps on the filename).
3. Ensure that the SD card is installed in the radio.
4. Connect the USB cable.
5. On the radio, press OK and select **Function** on the Display.
6. Scroll to **USB Mode Select** and select **Card Reader**.
7. On your computer, go to the SD card folder (it appeared when you connected the radio) labeled **IC-F3400D\_F5400D** or **IC-F7010\_F7510**.
8. Click the folder and go to **Setting**.

\*Extensions such as ".bmp" or ".wav" may be hidden by your PC as determined by the Folder Options settings.

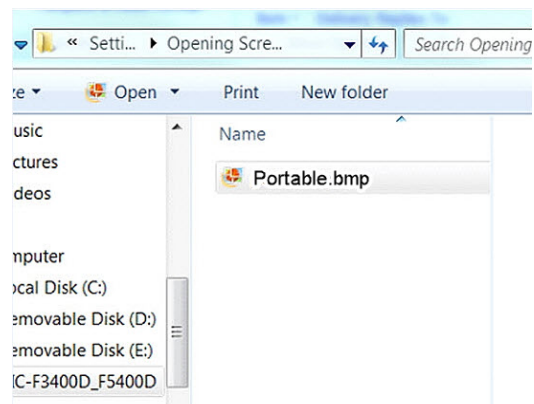
When such files are moved to your desktop, and the extensions are no longer present, *manually* adding them in again will render the file inactive.



9. In the **Setting** folder, go to **Opening Screen**.



10. From your desktop, copy and paste or drag the Portable.bmp file to the **Opening Screen** folder.



11. Power cycle the radio and your photo will appear on the radio's initial Display.

