

F3400D/F5400D Series Radio Programming

SOFTWARE MAIN (TOP) MENU OVERVIEW

Introduction

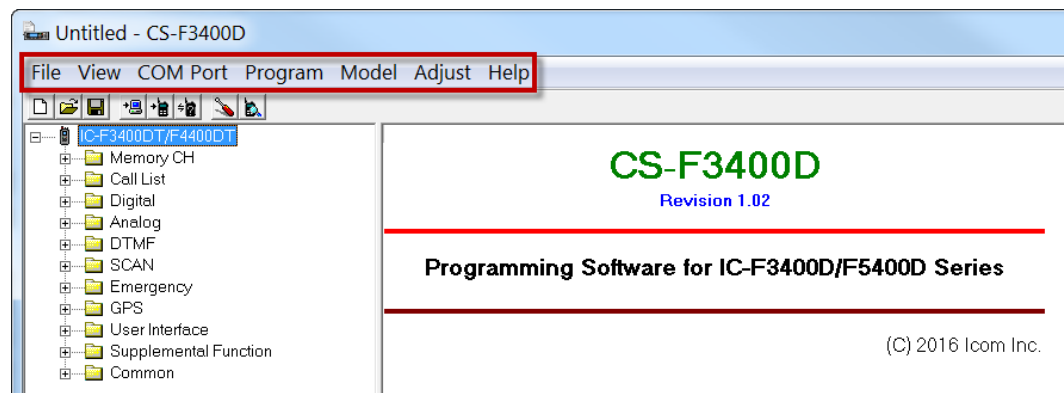
The CS-F3400D Cloning Software Main Menu contains the features you need to start programming your radio.

Prerequisites

- Radio is connected to the computer with a cloning cable. USB A to micro B type, with matching driver or OPC-1862 (portables) or OPC- 2363 (Mobiles)
- Firmware and Software are updated to the latest version
- Windows® 7, 8.1, or 10 (32/64bit) operating system

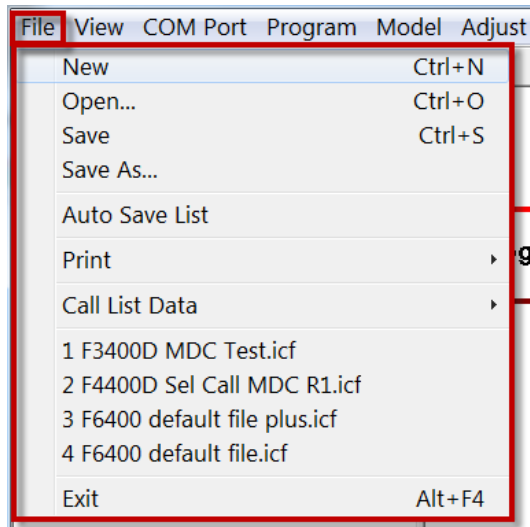
Programming

Open the CS-F3400D software.

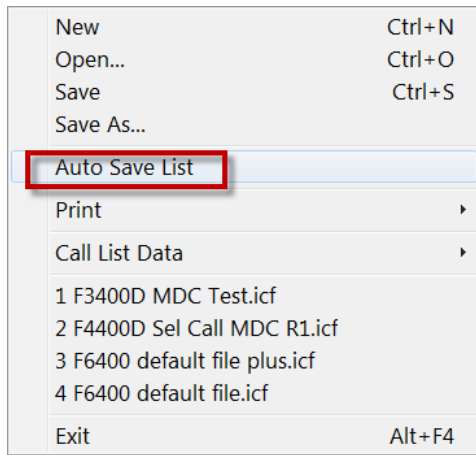


File Menu

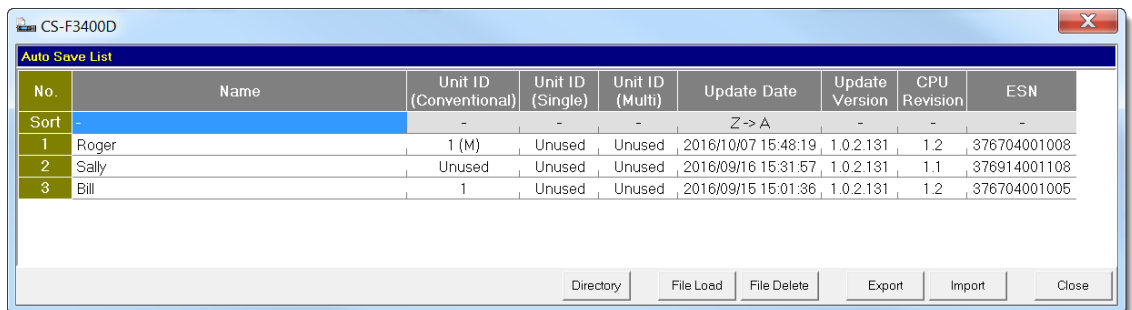
The File Menu allows you to open and save files, and shows recently accessed .icf files.



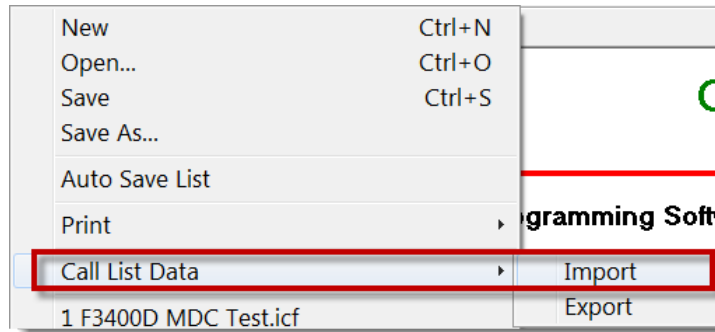
The **Auto Save List** feature enables you to auto save programming files to an automatically created auto save directory.



Auto saved files can be access and managed from **the Auto Save List**.

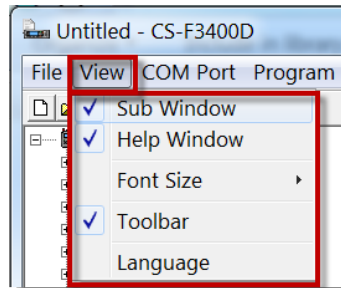


The **Call List Data** function allows you to import or export all the data in saved Call Lists.



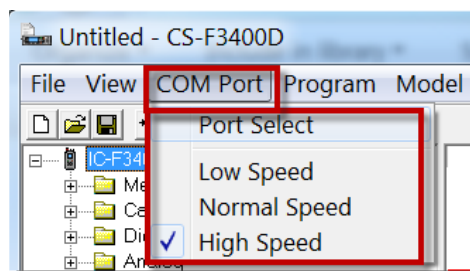
View Menu

The **View** menu allows you to change the software appearance, as well as changing the font size and language.



COM Port Menu

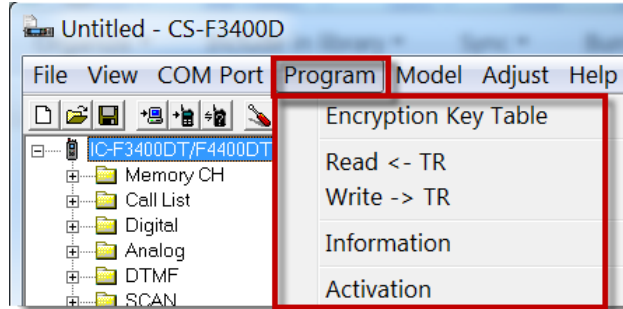
To communicate with the radio, you will need to select a COM port.



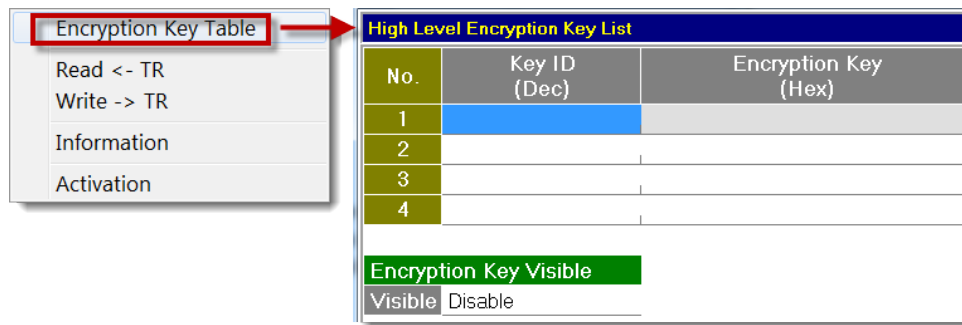
Click **Port Select** and choose the **Icom USB-to-Serial Comm. Port (COMX)** port if using a standard OPC cable or **IC-F3400D/5400D Series (COMX)** if using a standard USB to USB Micro cable.

Program Menu

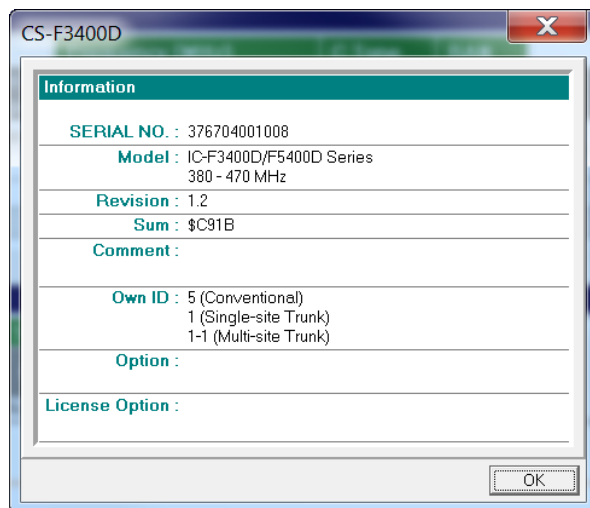
From the **Program** Menu, you can read/write and perform other related programming functions.



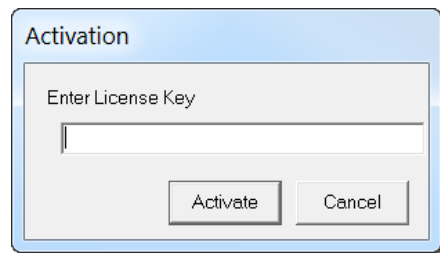
If you have enabled a high level encryption mode in the software, you can create a key in the **Encryption Key Table List**.



The **Information** screen shows vital information about this radio such as firmware versions, option boards, and activation licenses.



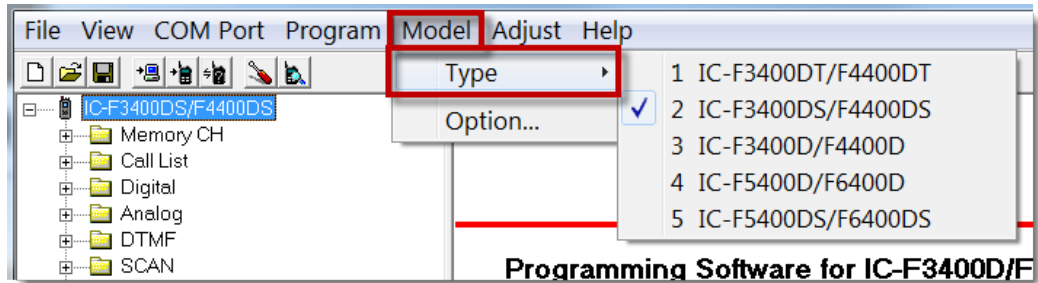
For optional features (ordered from Customer Service), an activation key can be entered in the Activation field.



The image shows a software dialog box titled "Activation". Inside the dialog, there is a text input field with the label "Enter License Key". Below the input field are two buttons: "Activate" and "Cancel".

Model Menu

Before you can use the programming software, you need to select the model type. When it is selected, the features associated with that model will appear in the software.



1. Click **Model** -> **Type** and select your model radio. Use the following graphic to help identify your model radio.



F3400D/
F4400D



F3400DS/
F4400DS



F3400DT/
F4400DT

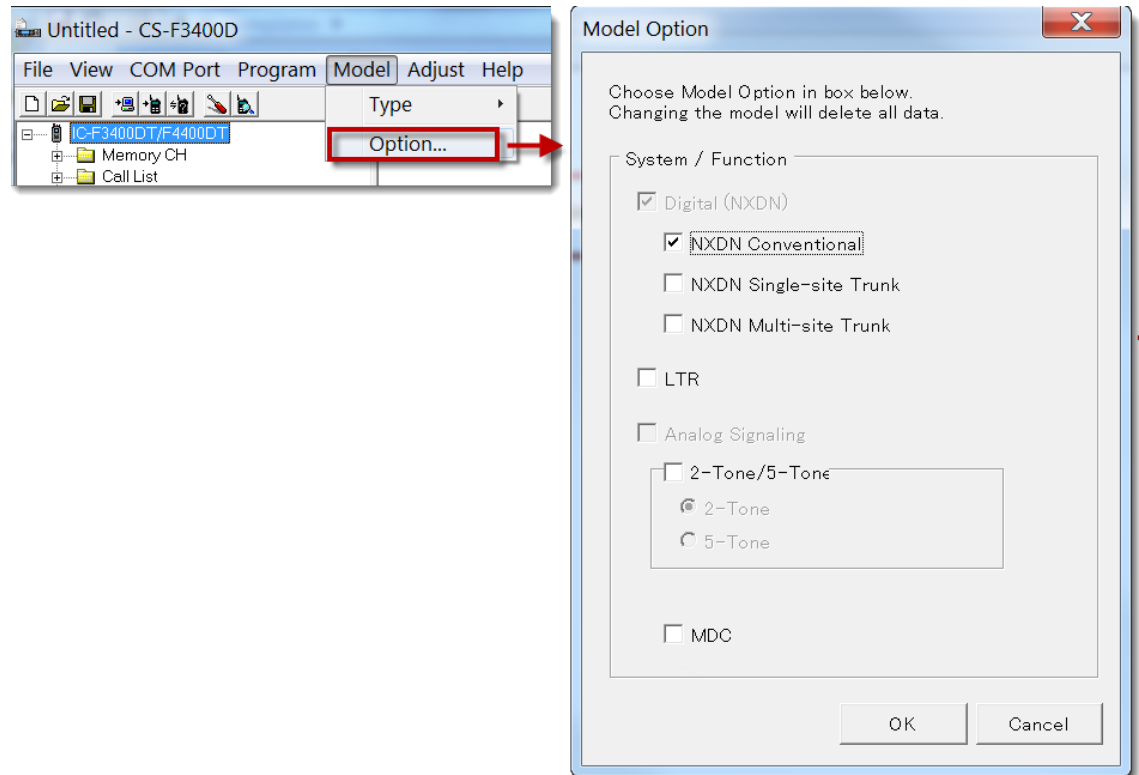


F5400DS/F6400DS



F5400D/F6400D

2. Click **Model** -> **Option** and select your intended feature options in the **Model Option** window.



Alternately, an already programmed Next Gen IDAS radio can be read into the software and the model/options for that radio will populate this window. If you change the model number, you will need to verify that the desired options are available.

Note: In some applications, if the model type is changed in an existing file, an error icon may appear in the navigation tree of the software. This indicates an incompatibility in the new model type assignment and may result in inconsistent functionality. To ensure proper operation, Icom highly recommends that changes be made to such a file before writing it into the radio.

