

F7010 Series Programming

LICENSE KEY ACTIVATION FOR OPTIONAL FEATURES

Introduction

Optional features for the F7010/F7510 series radios are enabled by entering a license key in the CS-F7500 cloning software. The following lists these additional features and the license code designator for each feature. The License Key represents a single radio and is tied to the radio ESN. The License Code appears in the **Information** window of the cloning software and identifies which options are installed on your radio.

License Keys are obtained by purchasing them from Icom America Customer Service. To order a License Key, you will need the ESN for each radio you want to be upgraded; the ESN is listed in your radio's **Information** window.

Optional Feature License Codes

Feature Option	Option License Code
Wide Band Enabling (government only)	ISL-P25W
Front Panel Programming	ISL-P25FP
AES Encryption (also requires UT-134 Encryption Unit)	ISL-P25AES
P25 Conventional Vote Scan	ISL-P25VS
P25 Phase 1 Trunking Upgrade	ISL-P25TR
P25 Phase 2 Trunking Upgrade*	ISL-P25P2
P25 Packet Data (GPS/Long Text)	ISL-P25DS

*This license requires the Phase 1 license upgrade before upgrading to Phase 2.

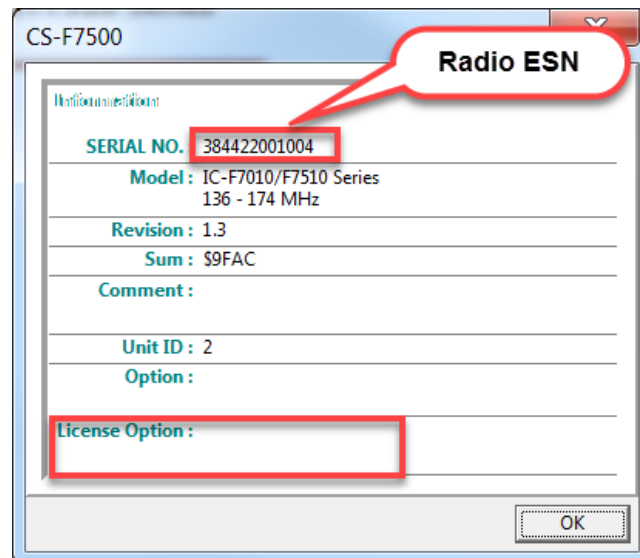
Prerequisites

- A valid license key or keys
- Radio is connected to the computer with a cloning cable. USB A to micro B type, with matching driver or OPC-1862 (portables) or OPC- 2363 (Mobiles) with matching drivers
- Firmware and Software are updated to the latest version
- Windows® 7, 8.1, or 10 (32/64bit) operating system

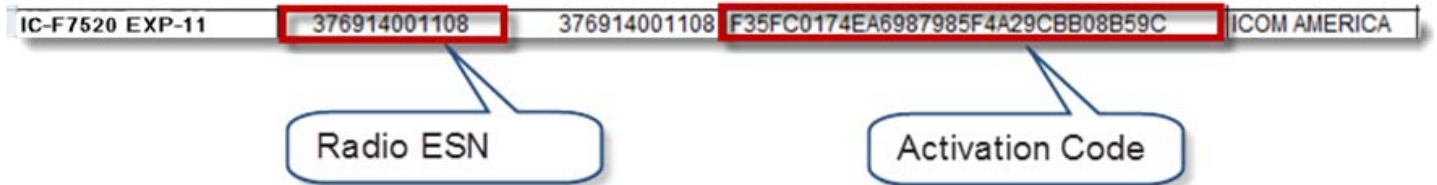
Upgrading

1. In the CS-F7500 cloning software, go to **Program -> Information** in the Main Menu and verify the feature options in your radio.

The license codes for any previously installed feature can be seen in **the License Option** section of the **Information** window. Verify that you do not already have the options that you are trying to activate in the radio. Your radio's ESN is listed in the **Information** window as **SERIAL NO.** (see below).

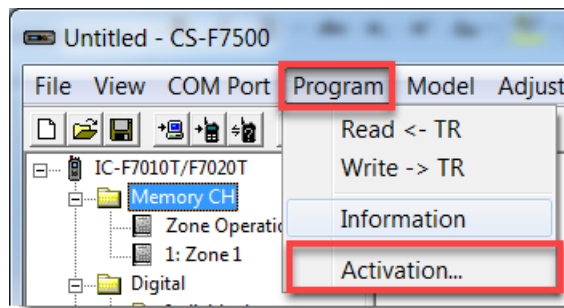


2. Order Activation Keys from Icom America Customer Service.

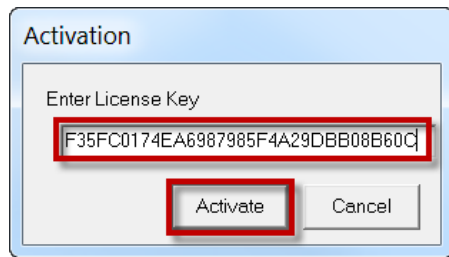


3. When you receive Icom's Activation Key email, copy the key.

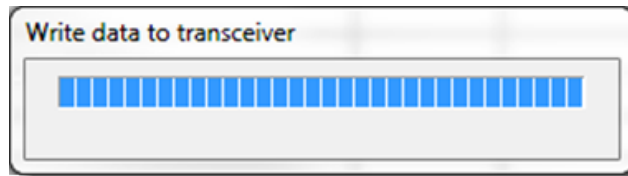
4. Go to **Program -> Activation**.



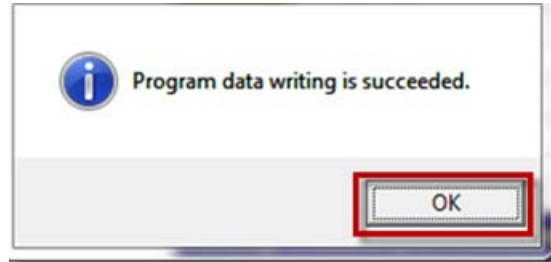
5. Paste the license Key in the **Activation** box. The radio must be turned on and connected to your computer.



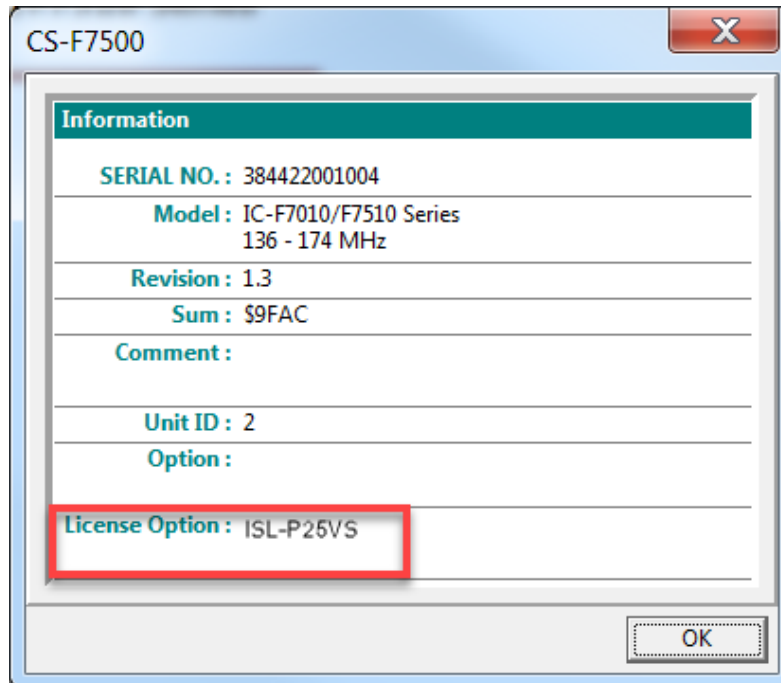
6. Click **Activate** to start writing the key to your radio.



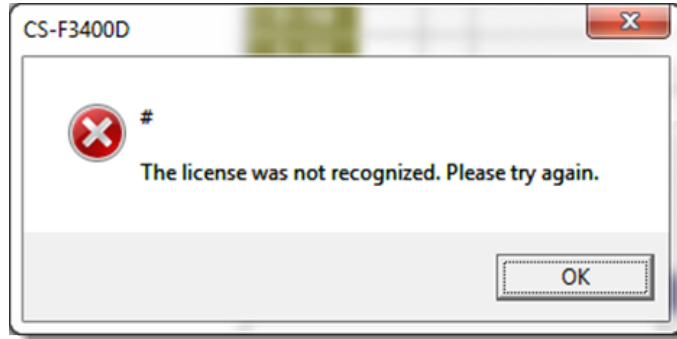
When the data is written to your radio, you will see the following window.



7. Once you see this window, Go to **Program -> Information** in the Main Menu and verify your options are listed in the **License Option** field.



Errors



If you see this error message, check the following:

- The License Key must be for this particular radio. They are assigned to an exclusive ESN and will not work for any other radio.
- Check for incorrect digits in the key.
- The radio battery may be depleted, charge the battery.