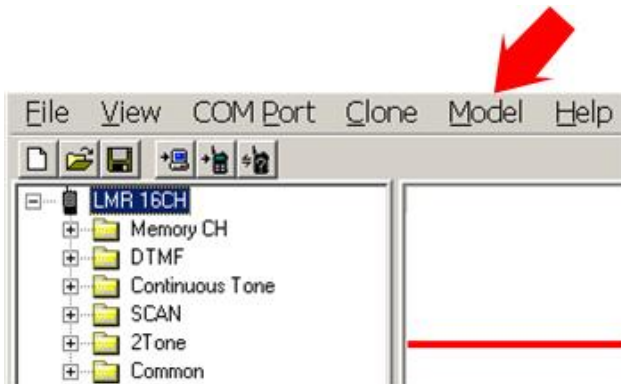


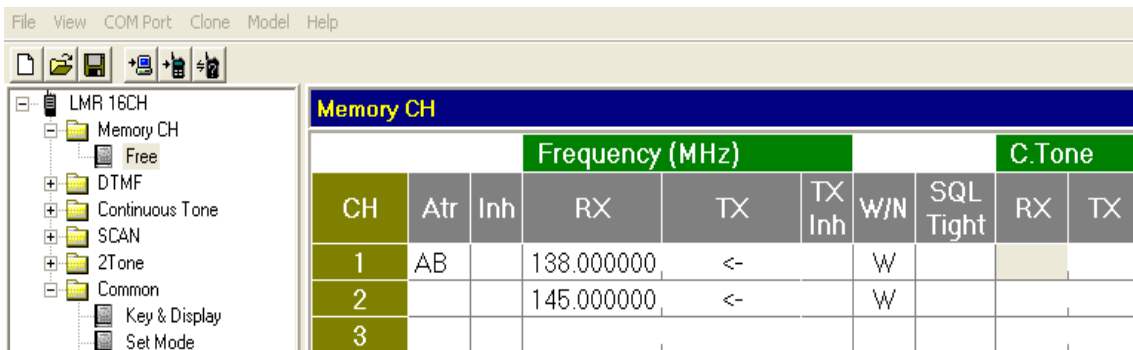
Simple Radio Programming

Note: The screen appearances are similar for all Icom radios, but the features in this procedure are the same.

1. Open the radio cloning software.
2. Click **Model** in the Menu Bar and select the desired model.



3. Enter your frequencies in the **Memory CH** window.



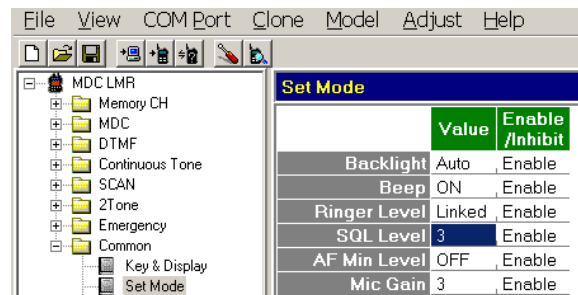
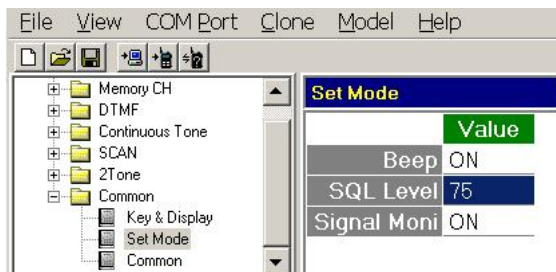
4. Select your tones in the **C.Tone** window (if required).

Frequency (MHz)							C.Tone						
CH	Atr	Inh	RX	TX	TX Inh	W/N	SQL Tight	RX	TX	Text	Com-pander	T	
1- 1	A		138.000000	<-		W							
1- 2	B		145.000000	<-		W		DTCS	85.4	118.8	162.2	192.8	241.8
1- 3								OFF	88.5	123.0	165.5	196.6	250.3
1- 4								67.0	91.5	127.3	167.9	199.5	254.1
1- 5								69.3	94.8	131.8	171.3	203.5	USER
1- 6								71.0	97.4	136.5	173.8	206.5	
1- 7								71.9	100.0	141.3	177.3	210.7	
1- 8								74.4	103.5	146.2	179.9	218.1	
1- 9								77.0	107.2	151.4	183.5	225.7	
1- 10								79.7	110.9	156.7	186.2	229.1	
1- 11								82.5	114.8	159.8	189.9	233.6	

5. Set **TOT** (Time Out Timer) and the **PWR Save** to **ON**.

CH	Com-pander	TOT	RF PWR	PWR Save
1- 1		ON	H	ON
1- 2			H	
1- 3				

6. Set the squelch. In models where this field is blank, start at 75, and if necessary after testing, increase in increments of 10. In models where the default is set to 2, set it at 3.



7. Click **Clone** and select **Write**. After the cloning is done, switch the radio power off then on.