



INSTRUCTIONS

PROGRAMMING SOFTWARE CS-V10MR

Thank you for choosing this Icom product. **READ ALL INSTRUCTIONS** carefully and completely before using this product.

■ System requirements

A PC with an OS and specifications, and the cable, listed below are required to use the CS-V10MR.

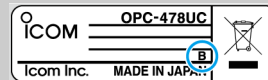
PC

- Microsoft® Windows® 10 (32/64 bit)
- Microsoft® Windows® 8.1 (32/64 bit)*
*Except for the "RT" version.
- A USB 1.1 or 2.0 port

Cable (Purchase separately)

- **OPC-478UC PROGRAMMING CABLE**

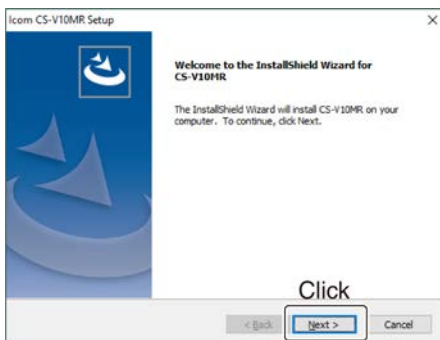
NOTE: Confirm your OPC-478UC has the letter "B" on its label. The cable with a label without "B" is not usable with Windows® 8.1 and 10.



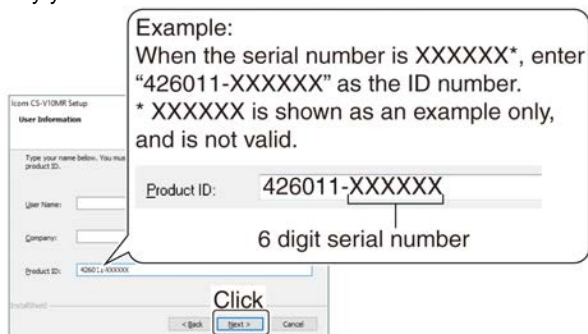
■ Software installation

When installing the software, confirm Windows has completed its startup, and then log in as the **administrator**.

1. Confirm no other applications are running.
2. Double-click "setup.exe."
 - If "User Account Control" is displayed, click <Yes> to continue.
3. "Welcome to the InstallShield Wizard for CS-V10MR" is displayed.
Click <Next >>.

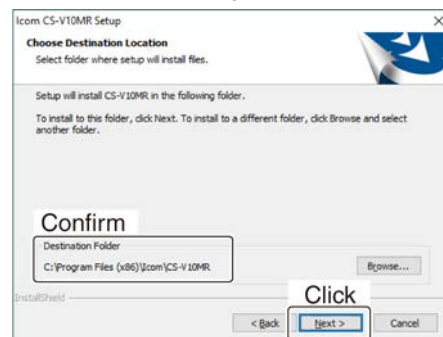


4. "User Information" is displayed.
Enter your name (option), your company name (option), and the product ID number as described below.
Click <Next >>.
 - Product ID number: 426011-(6 digit serial number)
 - If you downloaded the software, enter the ID provided by your distributor.

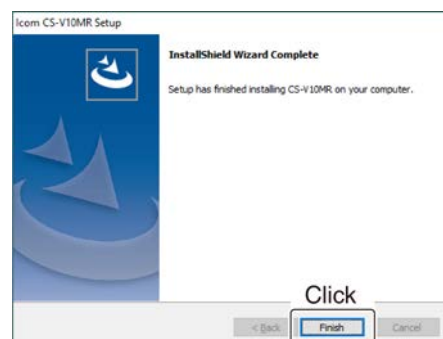


5. "Software License Agreement" is displayed.
Read carefully, and if you agree to the terms and conditions, click <Yes>.

6. "Choose Destination Location" is displayed.
Click <Next >>.
 - If desired, click <Browse...> to select another destination folder before clicking <Next >>.



7. After the installation has completed, "InstallShield Wizard Complete" is displayed.
Click <Finish>.



8. A 'CS-V10MR' group is created on the menu, and a shortcut icon is created on the desktop.

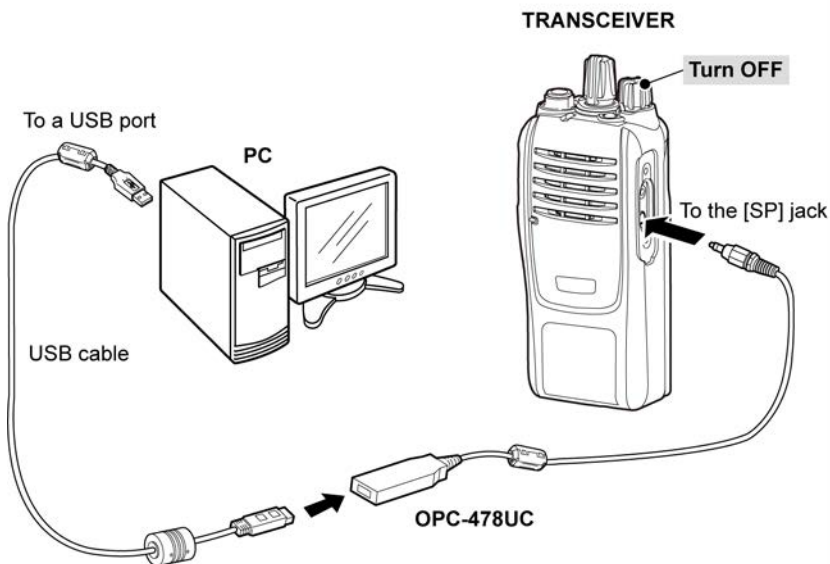
NOTE: You can uninstall the software using the "Apps & features" in the "Settings" menu.
To get started, click on Start > Settings > Apps > Apps & features.

■ Before connecting the cable to the PC

To use the **OPC-478UC** PROGRAMMING CABLE, you must first install a USB driver.
The latest USB driver and installation guide can be downloaded from the Icom website
(https://www.icomjapan.com/support/firmware_driver/).
Read the guide carefully before installing the driver.

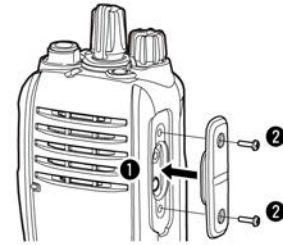
■ Connecting the cable

1. Rotate [VOL] to turn OFF the transceiver.
2. Connect the cable as shown below.
3. Rotate [VOL] to turn ON the transceiver.



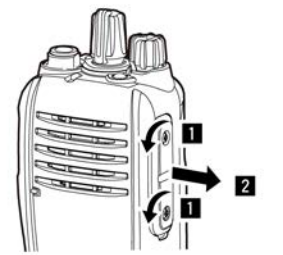
Attaching:

Attach the jack cover (1), then tighten the screws (2).




Detaching:

Remove the screws (1), then detach the jack cover. (2).



■ Reading and entering data

To prevent data loss, read all the transceiver's data before entering or editing parameters by using the software, even if the transceiver is factory fresh.
Click , or <Program> in the top menu of the software, and then select "Read ← TR" to start reading.

- While reading or writing entered data, **NEVER** turn OFF the transceiver or the PC, and **NEVER** disconnect the cable. Otherwise, the data could be lost or corrupted.
- Before reading or entering data, make a backup file on your PC.
A backup file enables you to easily restore if the data in the transceiver is accidentally deleted.

TIP: Refer to the software's Help file for assistance with the functions or settings.
To open the Help file, click <Help> in the top menu of the software and select "Contents," or simply push the [F1] key on the PC's keyboard.

Icom, Icom Inc. and Icom logo are registered trademarks of Icom Incorporated (Japan) in Japan, the United States, the United Kingdom, Germany, France, Spain, Russia, Australia, New Zealand, and/or other countries.

Microsoft and Windows are registered trademarks of Microsoft Corporation in the United States and/or other countries.

All other products or brands are registered trademarks or trademarks of their respective holders.

Icom Inc.

1-1-32 Kamiminami, Hirano-ku, Osaka 547-0003, Japan

Nov. 2020

Count on us!

A7624-2EX

© 2020 Icom Inc.