

## Precautions When Installing In A Vehicle

When installing this device into a car make sure that place you position the device does not interfere with driving operations.

Never install it in a place that will obstruct your view.

Do not attach it to the side glass as it may cause injury during a traffic accident.

Do not interfere with the airbag system.

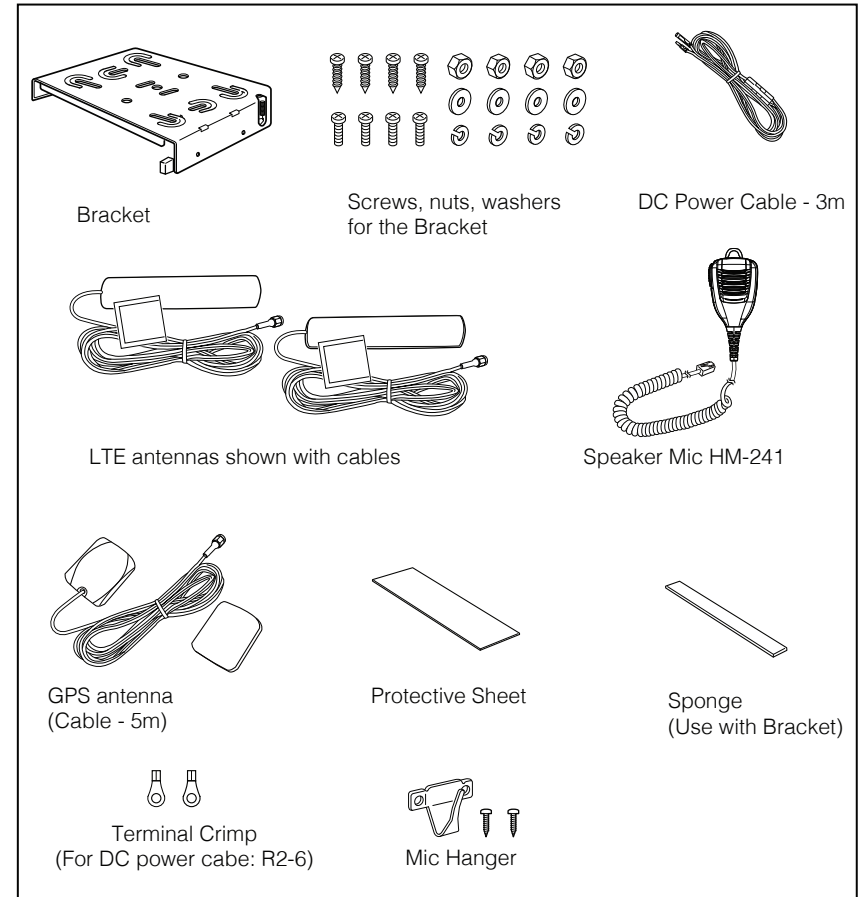
Do not twist or entangle the wires during installation.

We recommend for installation of the LTE antenna and other wiring to consult your dealership.

Always test to make sure all turn signals, wipers etc work after installing this in the automobile

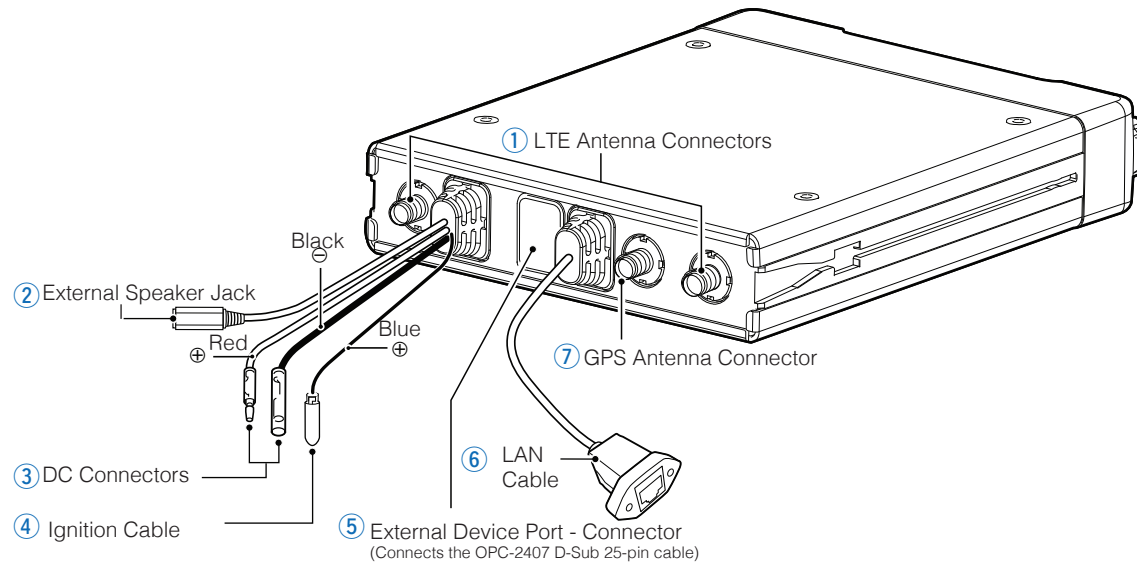
Install coaxial cables, at least 20 cm away from radio interference-aware devices so to not affect the computer (control unit) of the car.

## What is Needed for Installation



## Component Names

The initial descriptions may vary depending on the default settings of the unit.  
Please consult your dealership..



### 1. LTE Antennas

Connect the LTE antennas that are include. In order to get the best performance, connect both antennas not just one.

### 2. External Speaker Jack

Connects to the SP-30 / SP-35 or a separate power supply (sold separately).

### 3. DC Connectors (Direct Current Power)

The DC power cables connect to the automobile battery or to a separate power supply.

### 4. Ignition Cable

Detects that the vehicle has been turned on. Do not touch any other electrical connectors. Please check the state of the ignition cable terminal protective caps.

### 5. External Device Connectors

Remove cover to install the OPC-2407 (optional).

### 6. LAN Cable

Connect to the network device hub. Insert the LAN cable until you hear it click.

### 7. GPS Antenna Connector

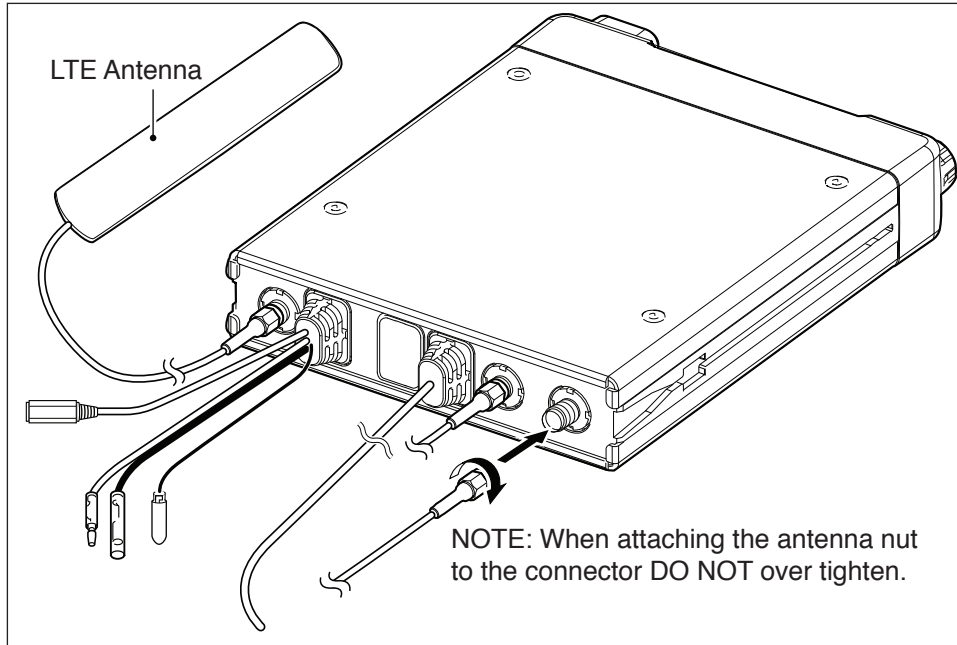
Connect the included GPS antenna to the connector here.

## LTE Antenna Connection

Attach both LTE antennas to ensure sufficient performance.

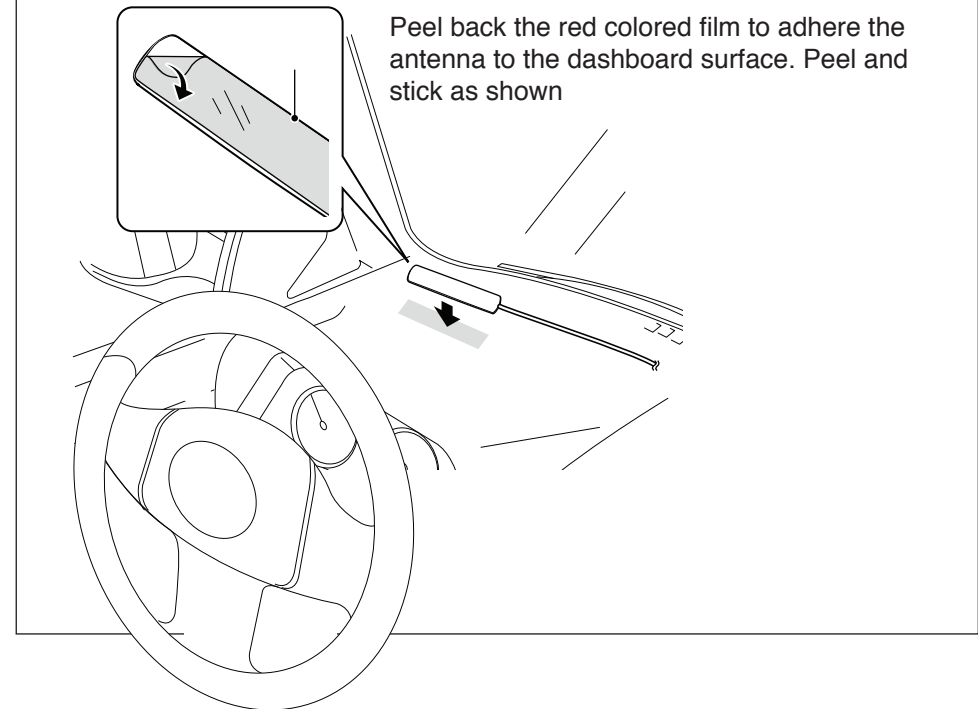
NOTE: If you feel that the radio reception is not ideal, change the location of the LTE antenna.

IP501M Rear View



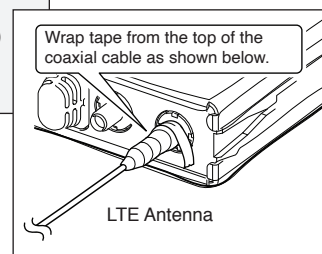
**Before installing, clean the dashboard from dirt and debris.**

- Keep at least 30cm between LTE antennas.
- Keep the LTE antenna and microphone at least 30cm away.
- To make it easier for reception, install the antenna on a horizontal surface (near the windshield) on the dashboard. But not obstructing the view



**NOTE:**

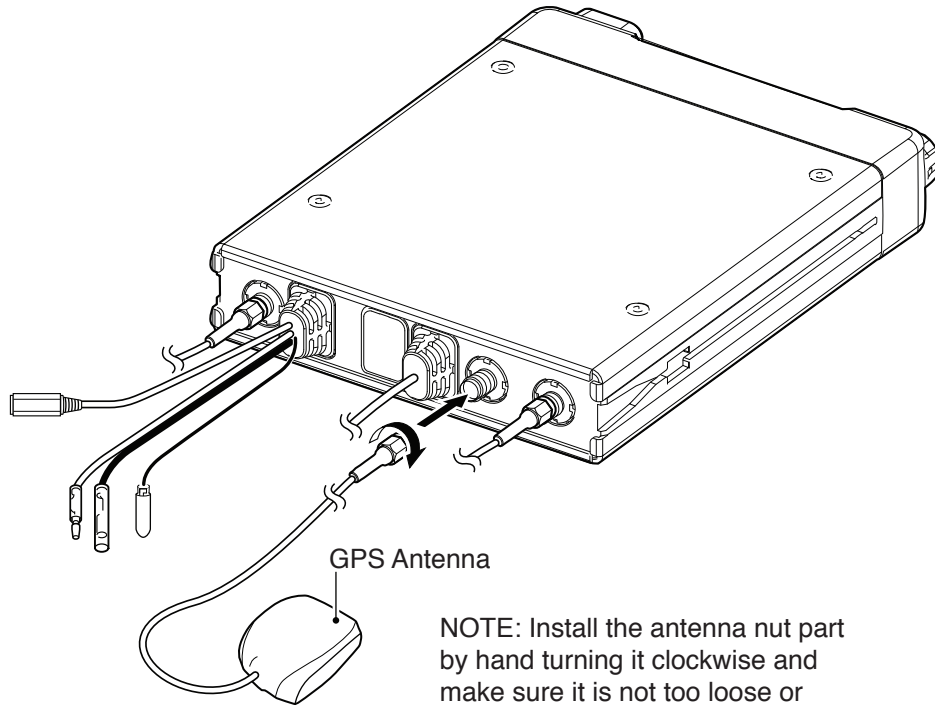
- Icom has received a technical standard conformity certification (construction design certification), so only the included LTE antenna can be used.
- Do not bend or pull the coaxial cable forcibly.
- Do not step on the coaxial cable, place heavy objects on it, or pinch it.
- Do not touch the connection cable with wet hands.
- When routing the coaxial cable, be careful not to apply excessive force.
- It is recommended if your vehicle is in a damp environment to wrap a waterproof self-adhesive tape around the cables (LTE antenna, GPS antenna DC power cables etc) as shown in the drawing to help guard against the effects of any water intrusion.



## GPS Antenna Connection

When using GPS, install it in a location that will not hinder positioning and in a direction that will not hinder driving.

IP501M Rear View

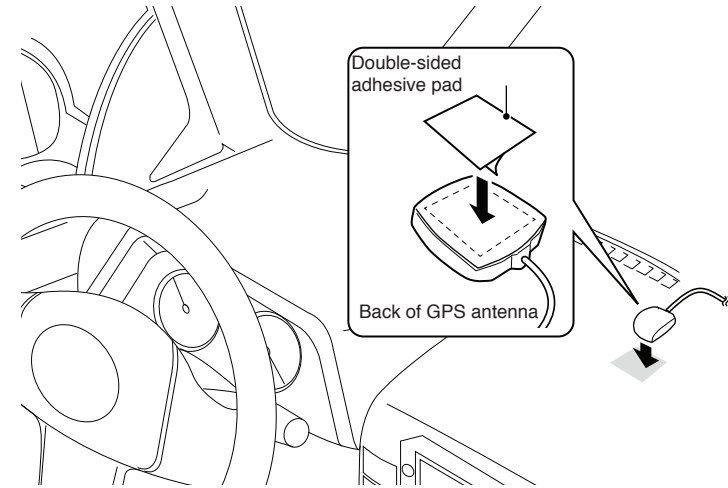


GPS Antenna

**NOTE:** Install the antenna nut part by hand turning it clockwise and make sure it is not too loose or over tight.

### Attaching the GPS Antenna

- Before installation, remove dust and dirt from the dashboard with the included cleaner/sponge.
- To make it easier for reception, install the antenna on a horizontal surface (near the windshield) on the dashboard. But not obstructing the view



#### NOTE:

- The supplied GPS antenna is only for use in the car. It cannot be installed outside the vehicle.
- Do not bend or pull the coaxial cable forcibly.
- Do not step on the coaxial cable, place heavy objects on it, or pinch it.
- Do not touch the connection cable with wet hands.
- When routing the coaxial cable, be careful not to apply excessive force.