

Vertex Standard

FIF-12 USB PROGRAMMING INTERFACE

The **FIF-12** is the USB 2.0 Interface Unit which allows cloning of channel data to Vertex Standard transceivers*, and/or re-writing of the firmware on some Vertex Standard transceivers*, using the USB port of a personal computer.

※: Check with your Vertex Standard Dealer for applicable models.

OPERATING SYSTEM REQUIREMENTS

Microsoft® Windows® 2000,
Windows® XP (32 bit Version only),
Windows® Vista (32 / 64 bit Version),
Windows® 7 (32 / 64 bit Version), or
Windows® 8 (32 / 64 bit Version)

PACKING LIST

FIF-12 Interface Unit
USB Cable
CD-ROM (Includes the Driver File and Operating Manual)

OPERATION

- ☐ **Log on to the computer using the “Administrator” account.** If you do not know how to change the account to “Administrator,” please consult your computer system administrator.
 - ☐ Install the **FIF-12** driver.
 - ☐ When the driver installation is finished, connect the supplied USB Cable between the **FIF-12** and your computer, then connect the appropriate Connection Cable (option) between the **FIF-12** and the transceiver.
 - ☐ Confirm the computer’s communication port which detects the **FIF-12**.
 - ☐ Execute the cloning/writing software.
- If this is the first time you have executed the programming/writing software on this computer after installing the **FIF-12** USB Interface, check the programming/writing software’s “CONFIGURE” parameter, to be sure that the communication port of the programming/writing software matches that set for the **FIF-12**. See page 16 for details.

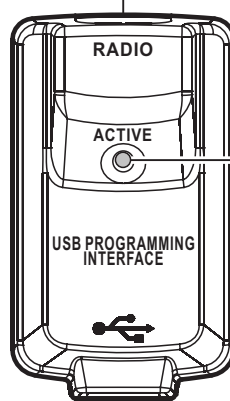
OPTIONAL CONNECTION CABLE

- CT-104A** Connection Cable with 8-pin Modular Jack
(for the **VX-2100/-2200/-4500/-4600/-7100/-7200**,
EVX-5300/-5400, **VXR-1000/-7000/-9000** etc)
- CT-105** Connection Cable with 14-pin Universal Connector
(for the **VX-537/-5500/-6000** etc)
- CT-106** Connection Cable 4-conductor Mini-phone Jack
(for the **VX-230/-350/-420/-450**, **EVX-530** etc)
- CT-108** Connection Cable with 14-pin Universal Connector
(for the **VX-820/-920** etc.)
- CT-171** Connection Cable for the **FRB-6** Tuning Interface Box

NOTE

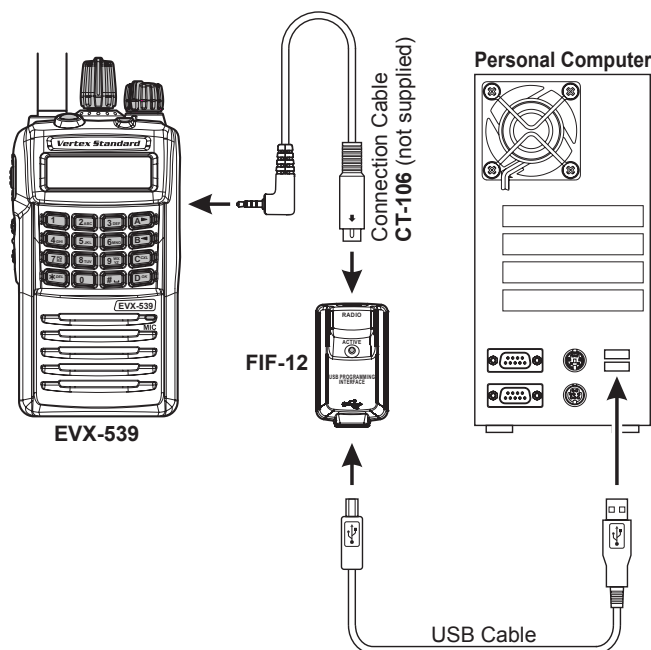
The **FIF-12** is designed to be connected directly to the computer’s USB port. Devices that are made to convert a USB device to a 9 pin serial port will not work and/or may damage the **FIF-12**.

Connect the Transceiver to this jack using the appropriate (optional) Connection Cable.



Status Indicator
GREEN: Normal Condition
RED: Uploading/Downloading
ORANGE: Firmware Writing

Connect your Computer to this jack using the supplied USB Cable.



TYPICAL SETUP FOR THE FIF-12

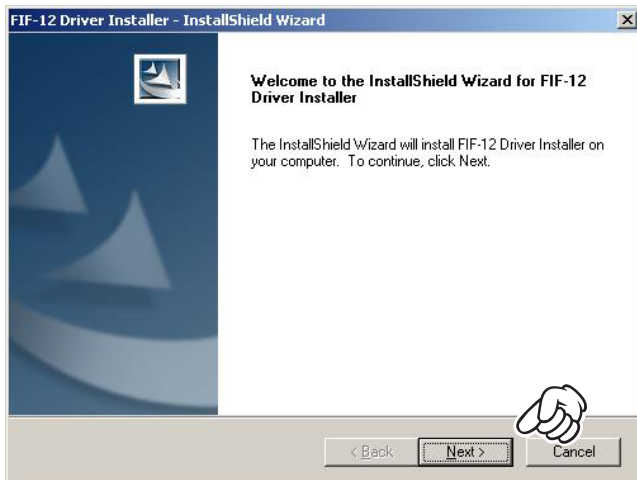
INSTALLATION PROCEDURE FOR THE FIF-12 DRIVER (Microsoft® Windows® 2000)

Note: Please perform this operation after changing user account to an “Administrator”.
DO NOT INSTALL ANY HARDWARE BEFORE INSTALLING FIF-12 DRIVER.

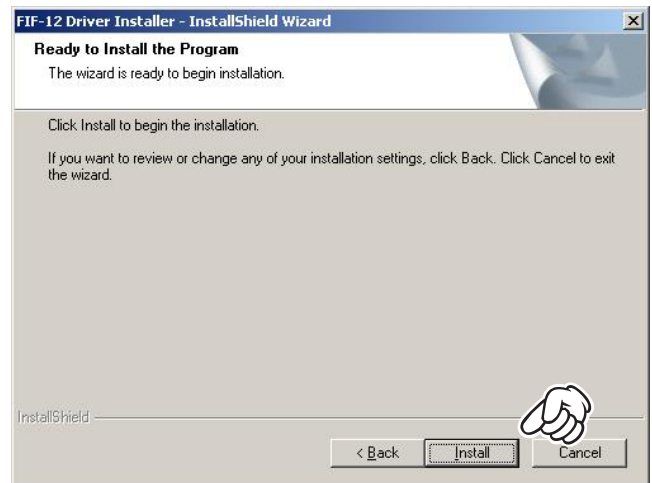
1. Set the supplied CD into your CD-ROM drive, then click the *left* mouse button on the “**setup.exe**”.



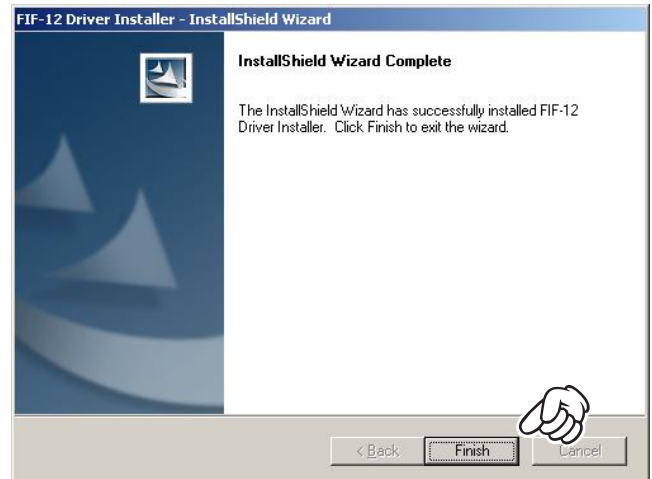
2. The following window (Install Shield Wizard) will be open. Click the left mouse button on “**Next >**” button.



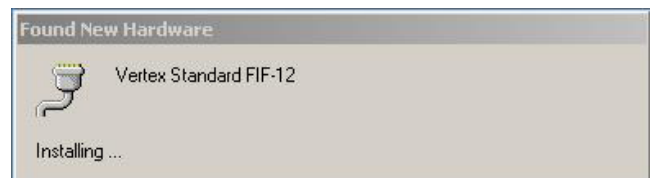
3. Click the *left* mouse button on the “**Install**” button.



4. Click the *left* mouse button on the “**Finish**” button.

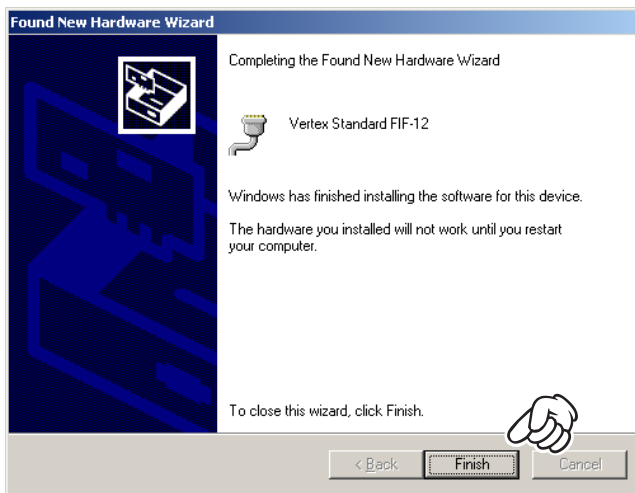


5. Connect the **FIF-12** to the USB port on your computer, the Driver is recognized automatically.



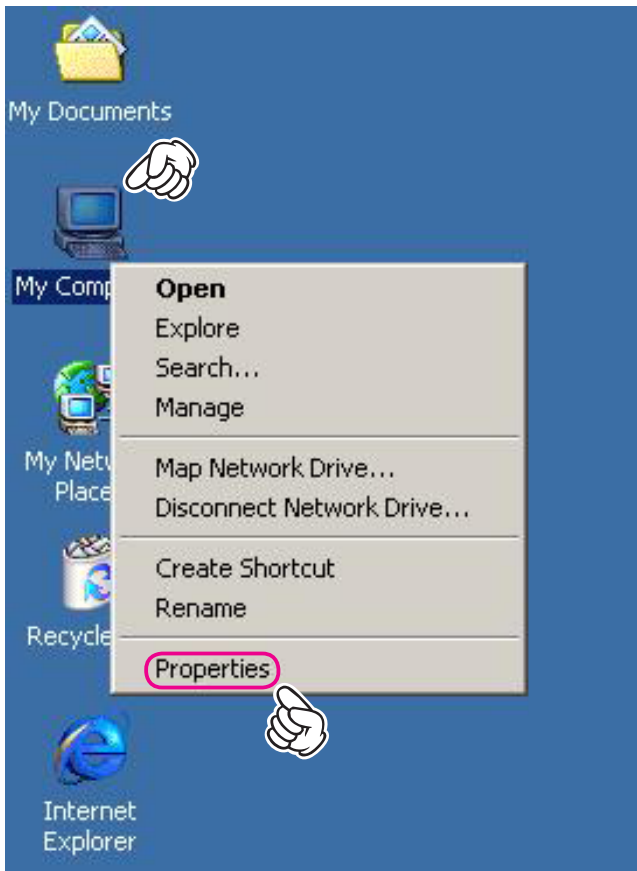
INSTALLATION PROCEDURE FOR THE FIF-12 DRIVER (Microsoft® Windows® 2000)

6. Click the *left* mouse button on the “Finish” button.

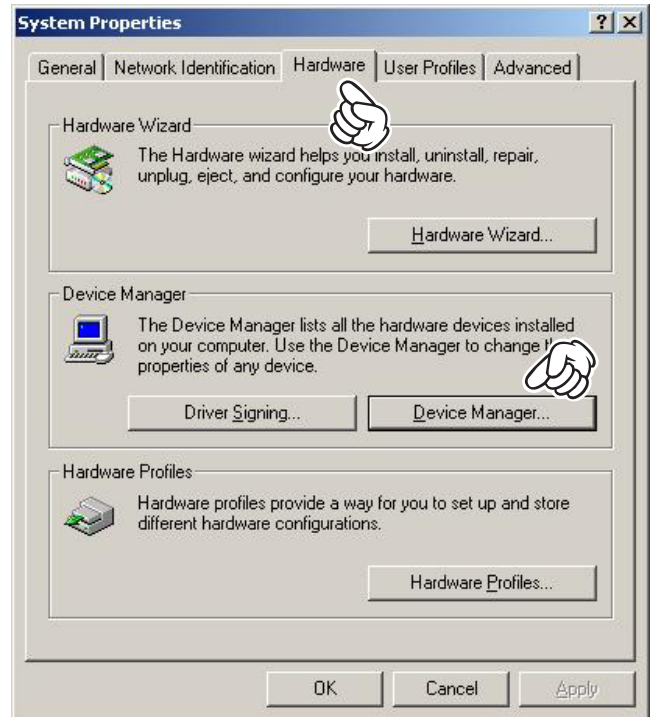


CONFIRMING THE COMPUTER'S COMMUNICATION PORT (Microsoft® Windows® 2000)

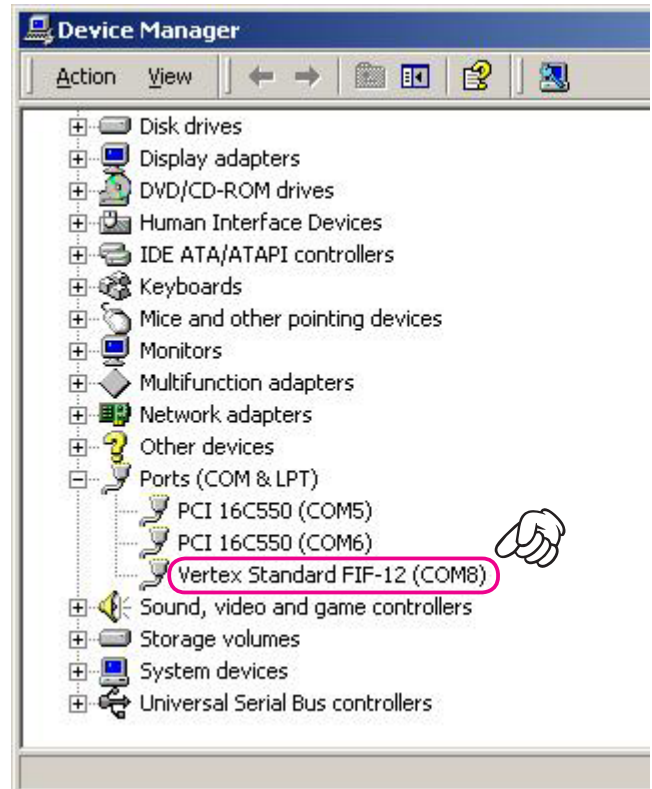
1. Click the *right* mouse button on the “**My Computer**” icon on the desktop, then click the left mouse button on the “**Properties**” item to open the “**System Properties**” window.



2. Click the *left* mouse button on the “**Hardware**” folder, then click the *left* mouse button on the “**Device Manager**” button to open the “**Device Manager**” window.



3. Confirm the computer's communication port which detects the **FIF-12**.



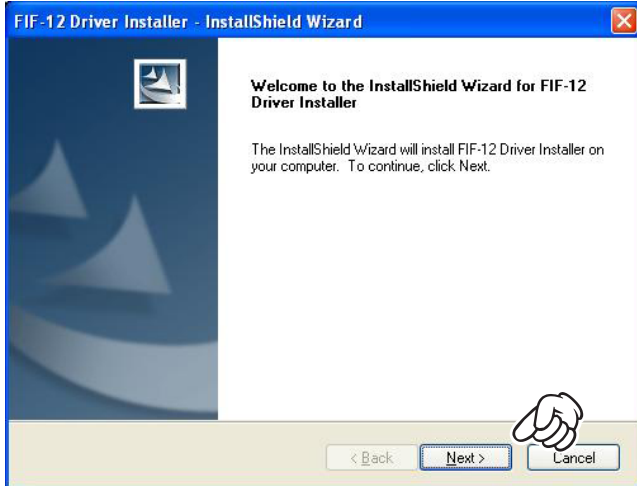
INSTALLATION PROCEDURE FOR THE FIF-12 DRIVER (Microsoft® Windows® XP)

Note: Please perform this operation after changing user account to an “Administrator”.
DO NOT INSTALL ANY HARDWARE BEFORE INSTALLING FIF-12 DRIVER.

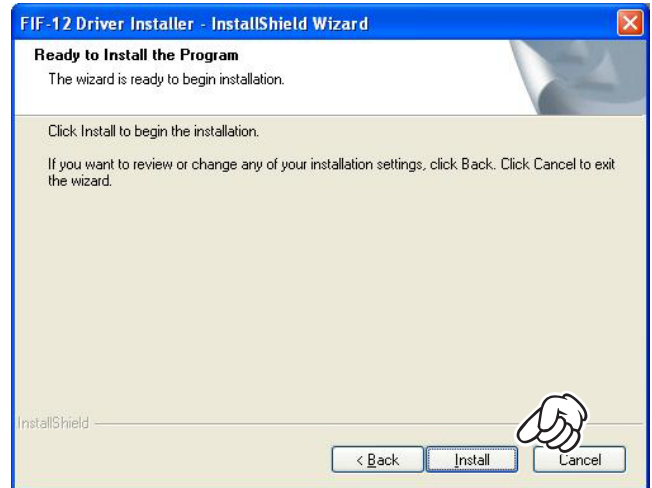
1. Set the supplied CD into your CD-ROM drive, then click the *left* mouse button on the “**setup.exe**”.



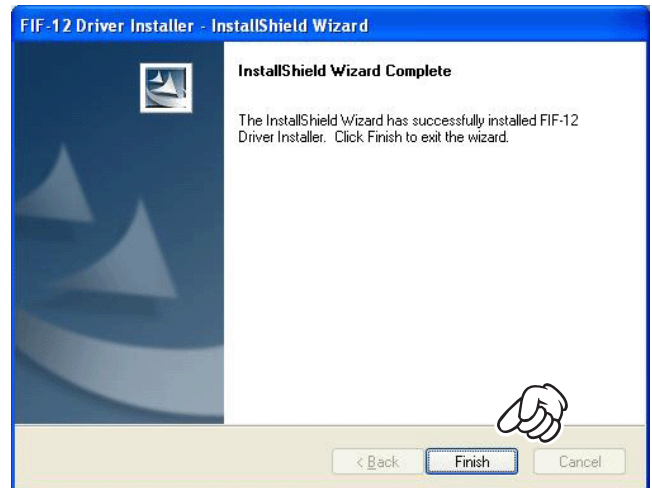
2. The following window (Install Shield Wizard) will be open. Click the left mouse button on “**Next >**” button.



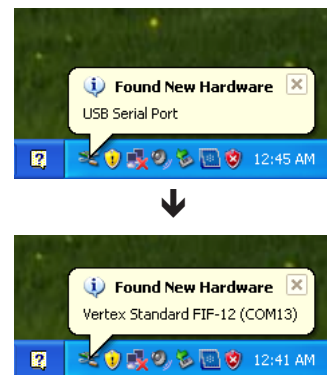
3. Click the *left* mouse button on the “**Install**” button.



4. Click the *left* mouse button on the “**Finish**” button.

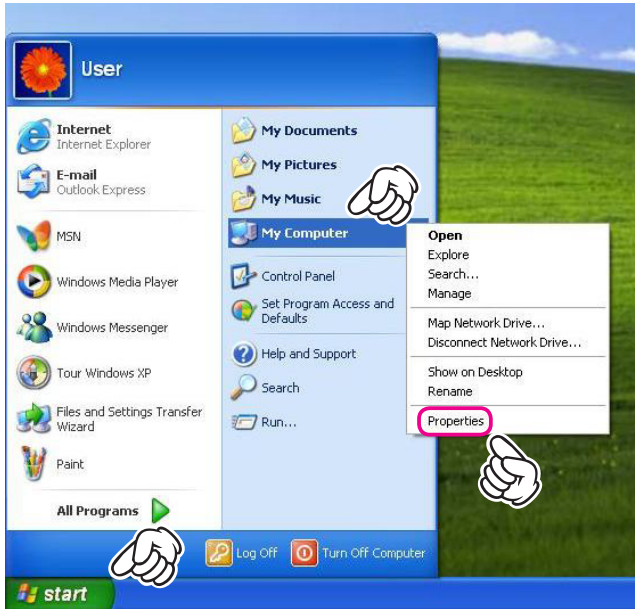


5. Connect the **FIF-12** to the USB port on your computer. The Driver is recognized automatically.

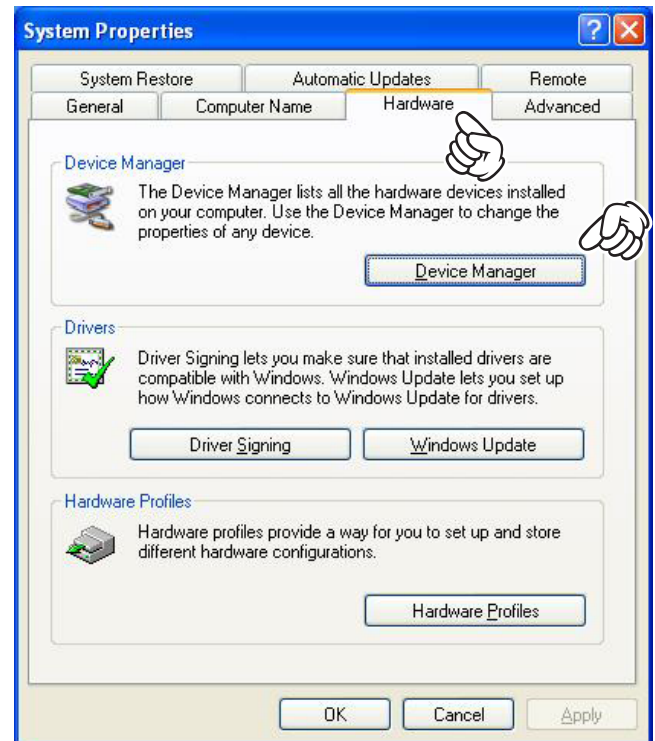


CONFIRMING THE COMPUTER'S COMMUNICATION PORT (Microsoft® Windows® XP)

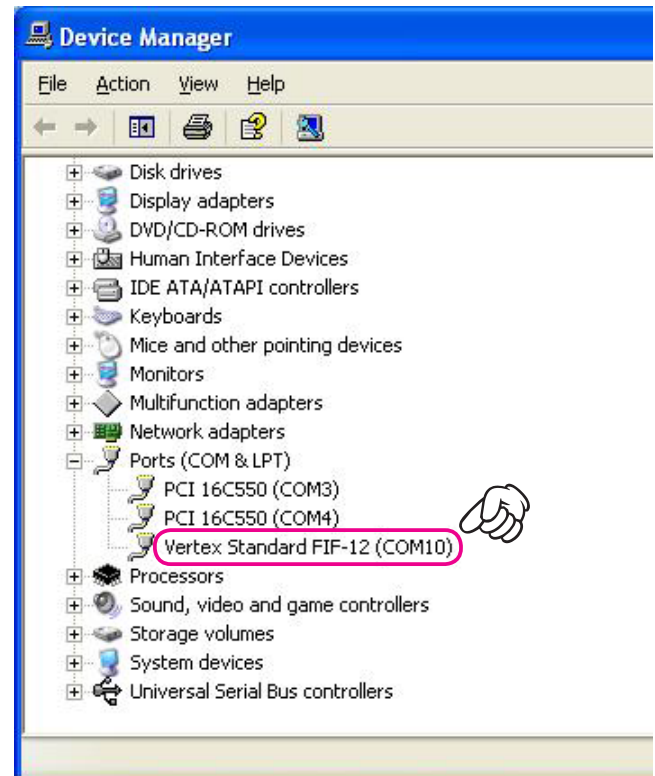
1. Click the *left* mouse button on the “start” button, then click the *right* mouse button on the “My Computer” item. Click the *left* mouse button on “Properties” to open the “System Properties” window.



2. Click the *left* mouse button on the “Hardware” folder, then click the *left* mouse button on the “Device Manager” button to open the “Device Manager” window.



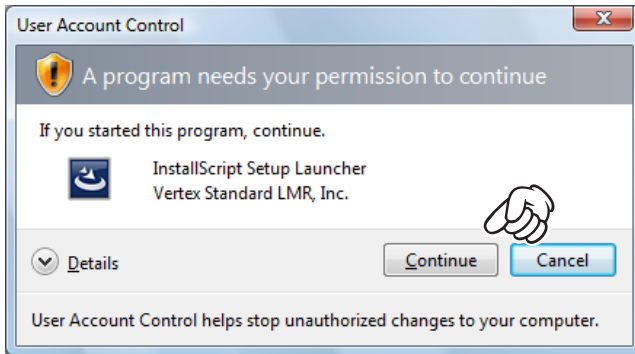
3. Confirm the computer's communication port which detects the FIF-12.



INSTALLATION PROCEDURE FOR THE FIF-12 DRIVER (Microsoft® Windows® Vista)

Note: Please perform this operation after changing user account to an “Administrator”.
DO NOT INSTALL ANY HARDWARE BEFORE INSTALLING FIF-12 DRIVER.

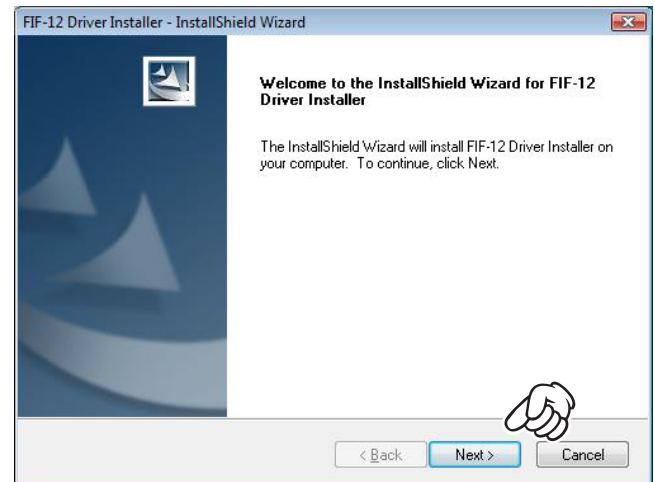
1. Set the supplied CD into your CD-ROM drive, then click the *left* mouse button on the “**setup.exe**”.
2. The following window (User Account Control) will be open. Click the *left* mouse button on “**Continue**” button.



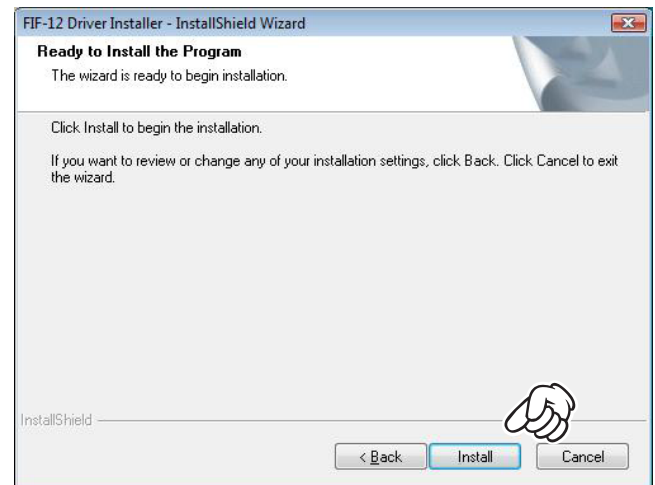
3. The following window (FIF-12 Driver Setup) will be open.



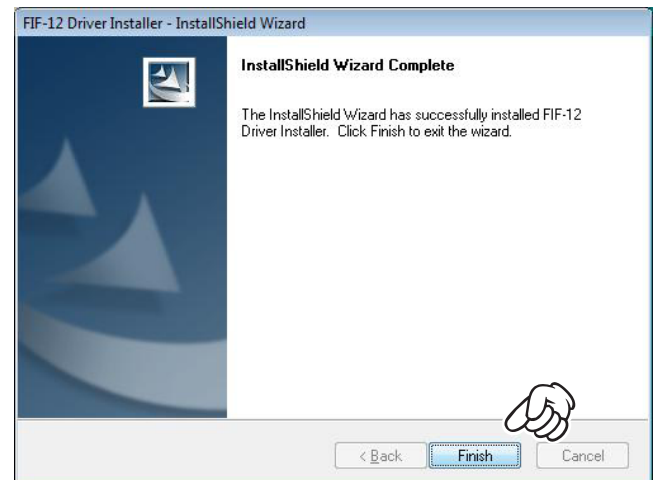
4. The following window (Install Shield Wizard) will be open. Click the *left* mouse button on “**Next >**” button.



5. Click the *left* mouse button on the “**Install**” button.

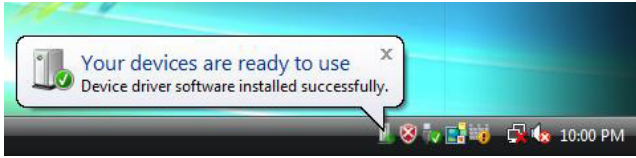


6. Click the *left* mouse button on the “**Finish**” button.



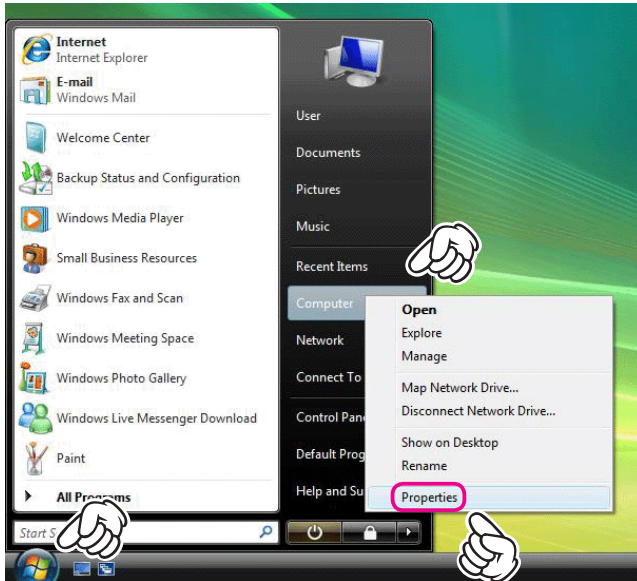
INSTALLATION PROCEDURE FOR THE FIF-12 DRIVER (Microsoft® Windows® Vista)

7. Connect the **FIF-12** to the USB port on your computer,
the Driver is recognized automatically.

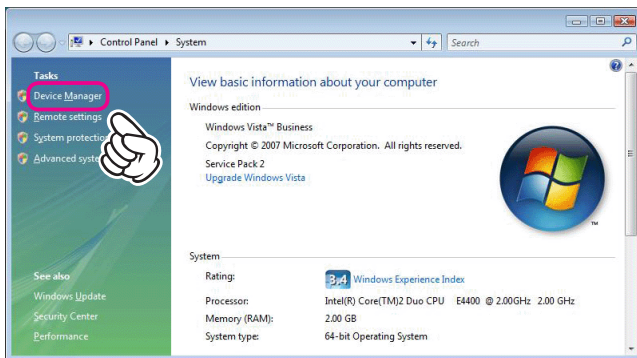


CONFIRMING THE COMPUTER'S COMMUNICATION PORT (Microsoft® Windows® Vista)

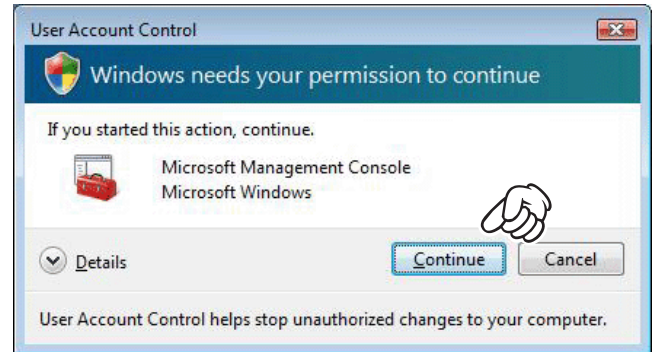
1. Click the *left* mouse button on the “**start**” button, then click the *right* mouse button on the “**Computer**” Item. Click the *left* mouse button on “**Properties**” to open the “**System Properties**” window.



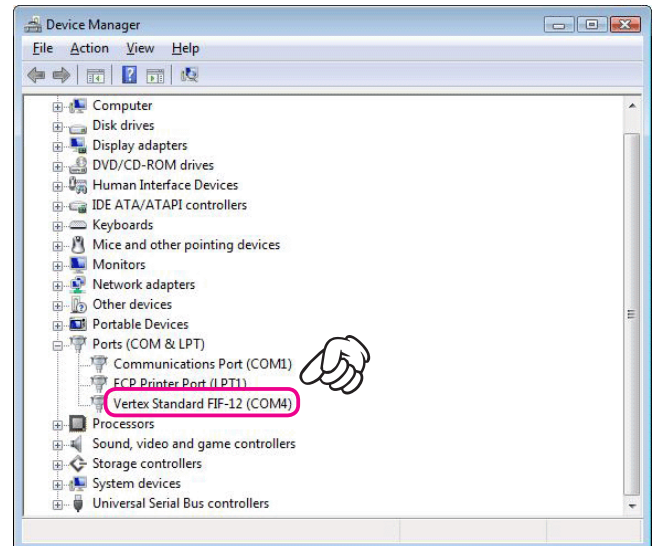
2. Click the *left* mouse button on the “**Device Manager**” Item to open the “**User Account Control**” window.



3. Click the *left* mouse button on the “**Continue**” button to open the “**Device Manager**” window.



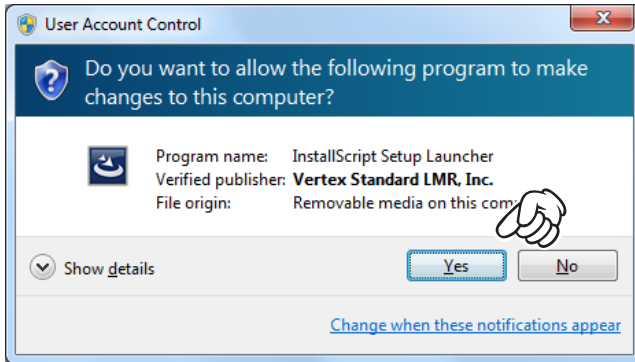
4. Confirm the computer's communication port which detects the FIF-12.



INSTALLATION PROCEDURE FOR THE FIF-12 DRIVER (Microsoft® Windows® 7)

Note: Please perform this operation after changing user account to an “Administrator”.
DO NOT INSTALL ANY HARDWARE BEFORE INSTALLING FIF-12 DRIVER.

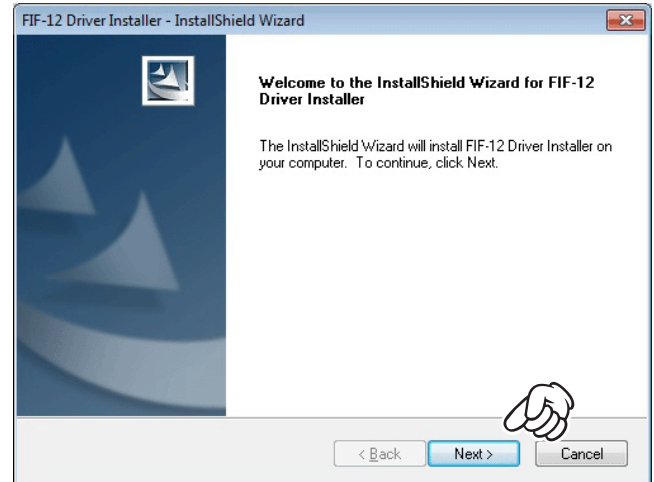
1. Set the supplied CD into your CD-ROM drive, then click the *left* mouse button on the “**setup.exe**”.
2. The following window (User Account Control) will be open. Click the left mouse button on “**Yes**” button.



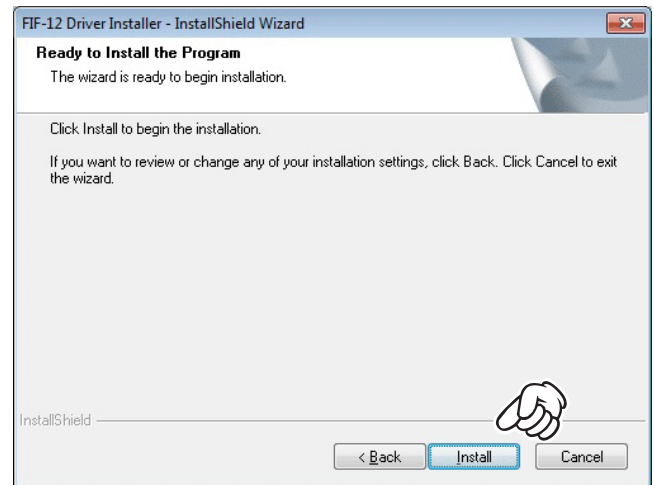
3. The following window (FIF-12 Driver Setup) will be open.



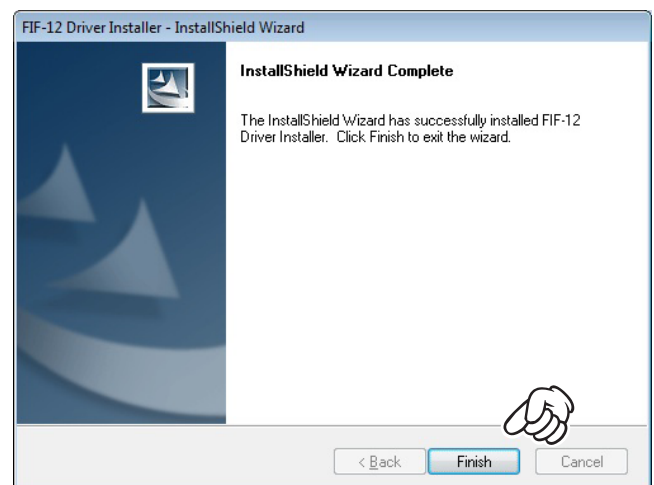
4. The following window (Install Shield Wizard) will be open. Click the left mouse button on “**Next >**” button.



5. Click the *left* mouse button on the “**Install**” button.

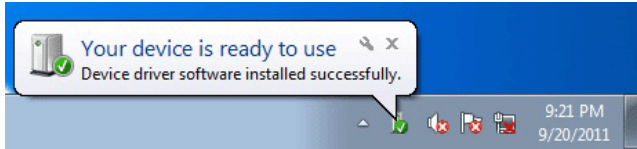


6. Click the *left* mouse button on the “**Finish**” button.



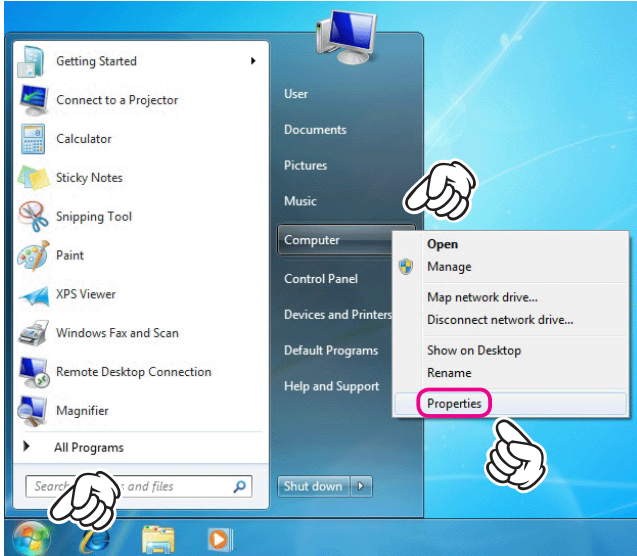
INSTALLATION PROCEDURE FOR THE FIF-12 DRIVER (Microsoft® Windows® 7)

7. Connect the **FIF-12** to the USB port on your computer,
the Driver is recognized automatically.

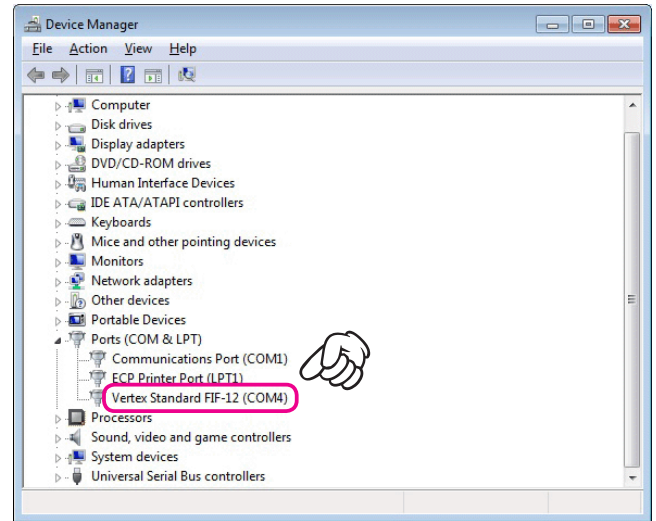


CONFIRMING THE COMPUTER'S COMMUNICATION PORT (Microsoft® Windows® 7)

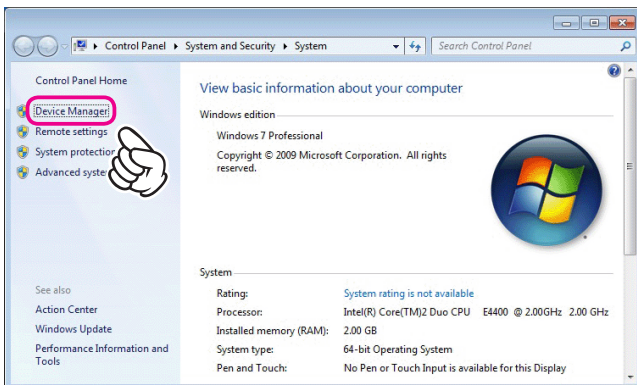
1. Click the *left* mouse button on the “**start**” button, then click the *right* mouse button on the “**Computer**” Item. Click the *left* mouse button on “**Properties**” to open the “**System Properties**” window.



3. Confirm the computer's communication port which detects the FIF-12.



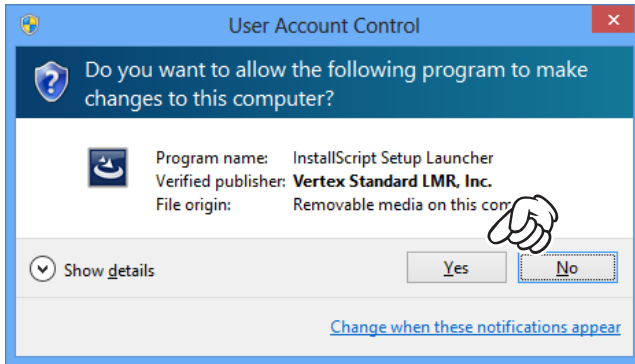
2. Click the *left* mouse button on the “**Device Manager**” Item to open the “**Device Manager**” window.



INSTALLATION PROCEDURE FOR THE FIF-12 DRIVER (Microsoft® Windows® 8)

Note: Please perform this operation after changing user account to an “Administrator”.
DO NOT INSTALL ANY HARDWARE BEFORE INSTALLING FIF-12 DRIVER.

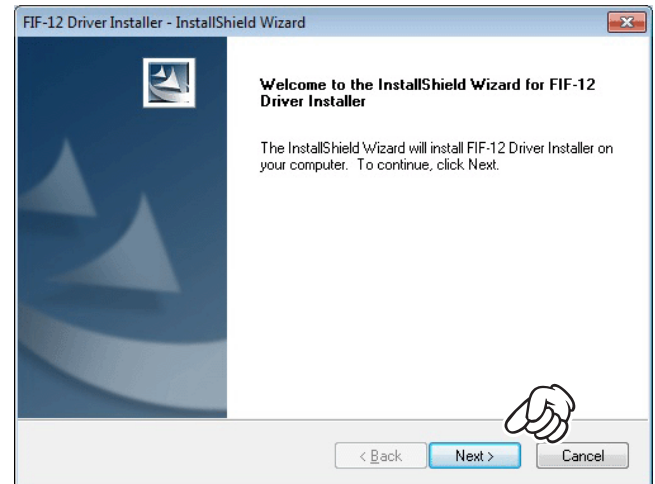
1. Set the supplied CD into your CD-ROM drive, then click the *left* mouse button on the “**setup.exe**”.
2. The following window (User Account Control) will be open. Click the left mouse button on “**Yes**” button.



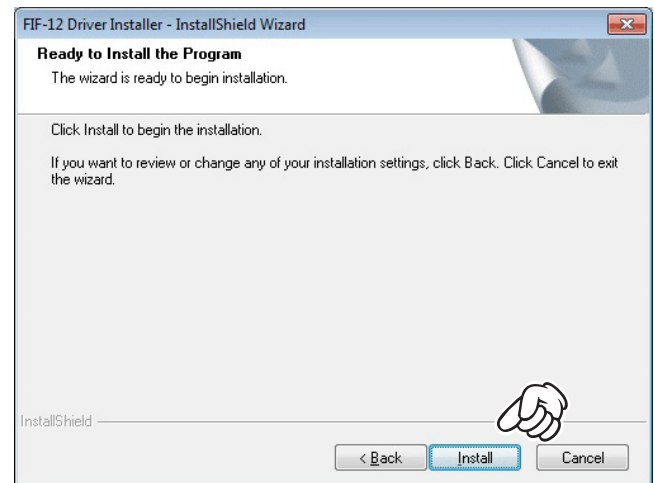
3. The following window (FIF-12 Driver Setup) will be open.



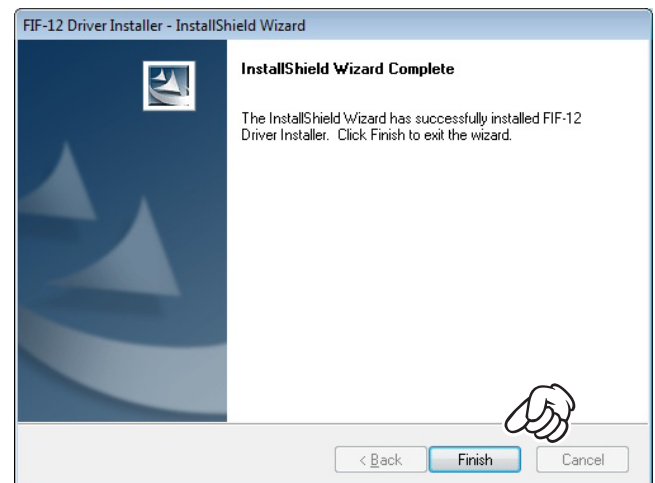
4. The following window (Install Shield Wizard) will be open. Click the left mouse button on “**Next >**” button.



5. Click the *left* mouse button on the “**Install**” button.

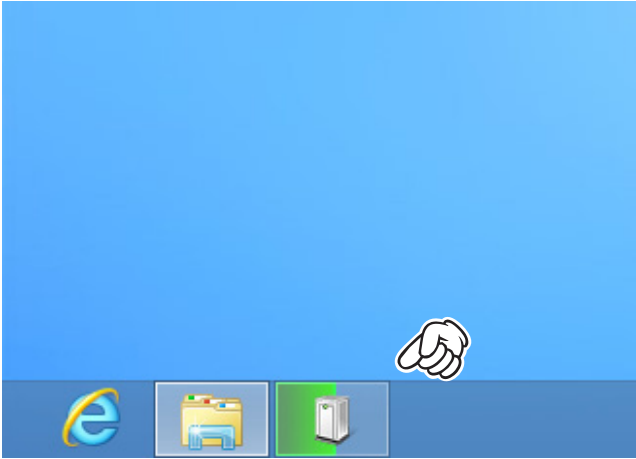


6. Click the *left* mouse button on the “**Finish**” button.



INSTALLATION PROCEDURE FOR THE FIF-12 DRIVER (Microsoft® Windows® 8)

7. Connect the **FIF-12** to the USB port on your computer, the Driver is recognized automatically.
The “**Hardware**” icon will appear briefly at the Task Bar.

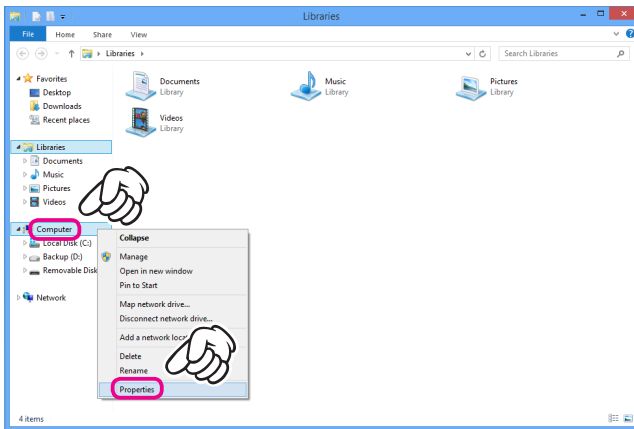


CONFIRMING THE COMPUTER'S COMMUNICATION PORT (Microsoft® Windows® 8)

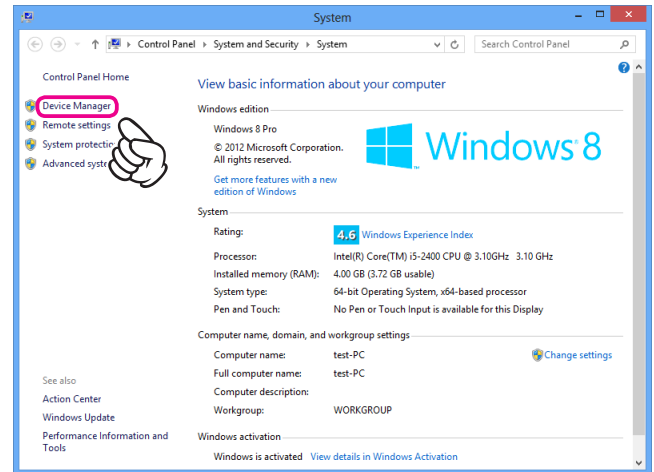
1. Click the *left* mouse button on the “**Libraries**” icon to open the “**Libraries**” window.



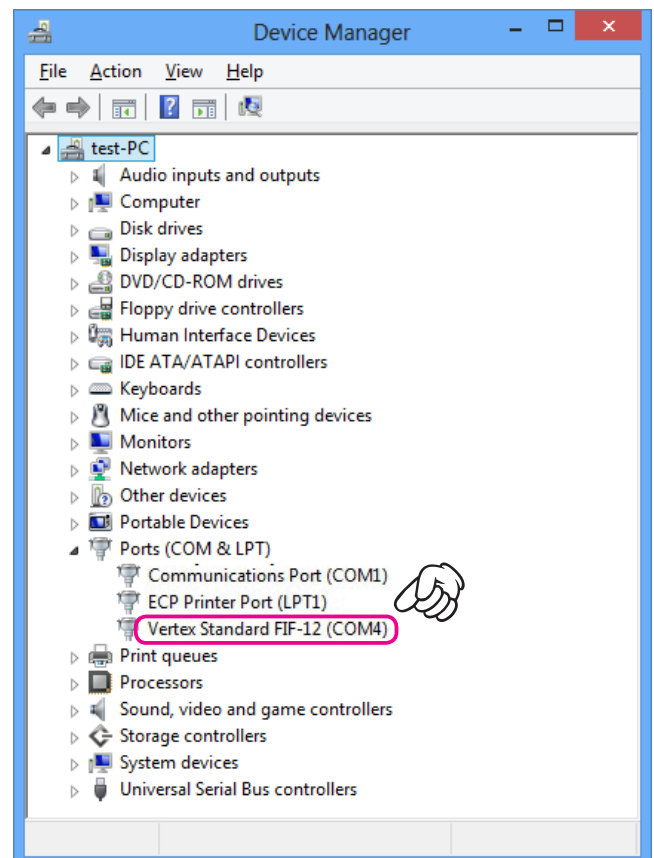
2. Click the *right* mouse button on the “**Computer**” Item, then click the *left* mouse button on “**Properties**” to open the “**System Properties**” window.



3. Click the *left* mouse button on the “**Device Manager**” Item, to open the “**Device Manager**” window.

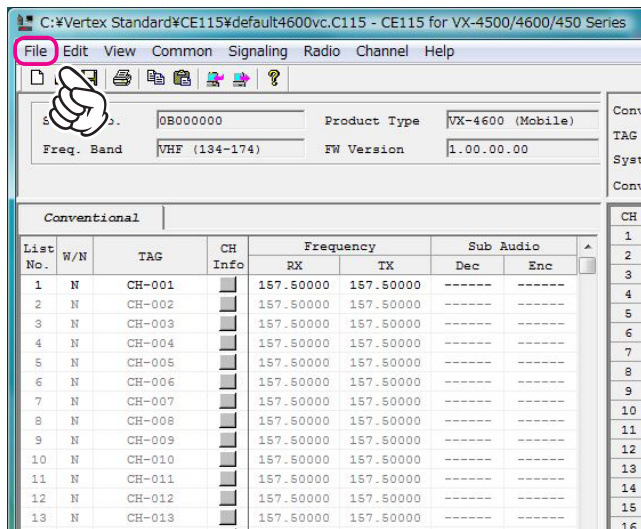


4. Confirm the computer's communication port which detects the FIF-12.

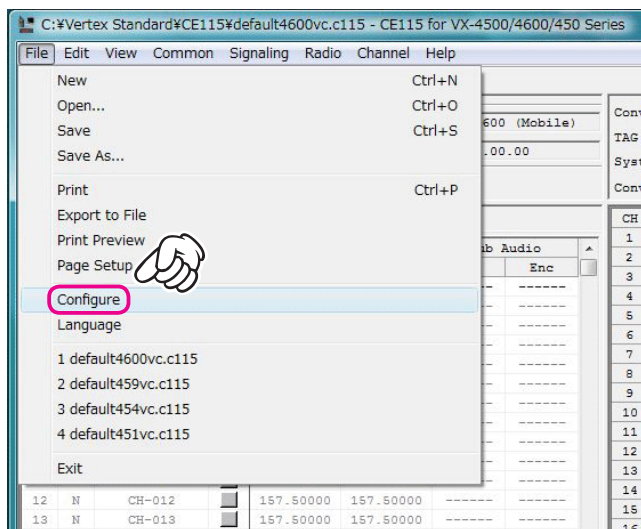


“CONFIGURE” PARAMETER SETTING PROCEDURE (EXAMPLE: “CE115”)

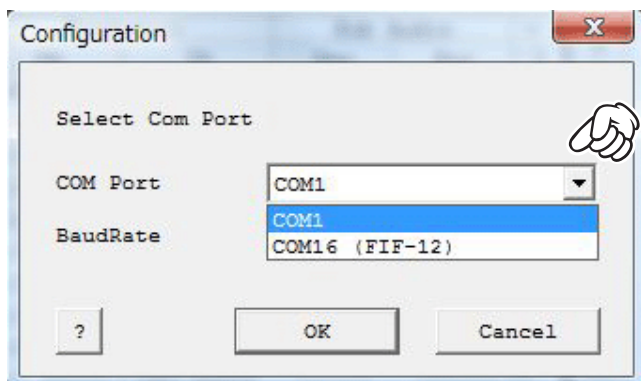
1. Click the *left* mouse button on the “File” parameter.



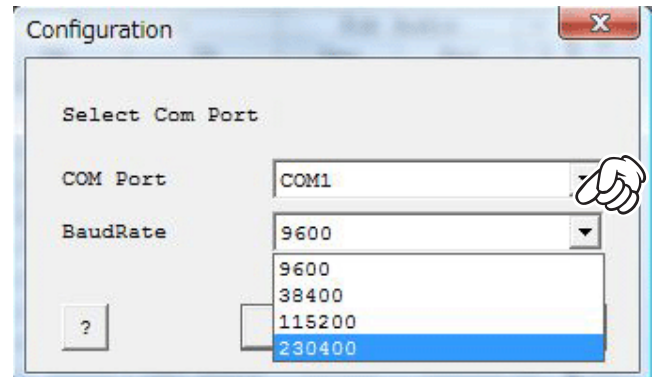
2. Click the *left* mouse button on the “Configure” item to open the “Configure” window.



3. Select the communication port which is detecting the FIF-12.



4. Select the Baud Rate for the transceiver’s computer interface circuitry.



5. Click the *left* mouse button on the “OK” button.

