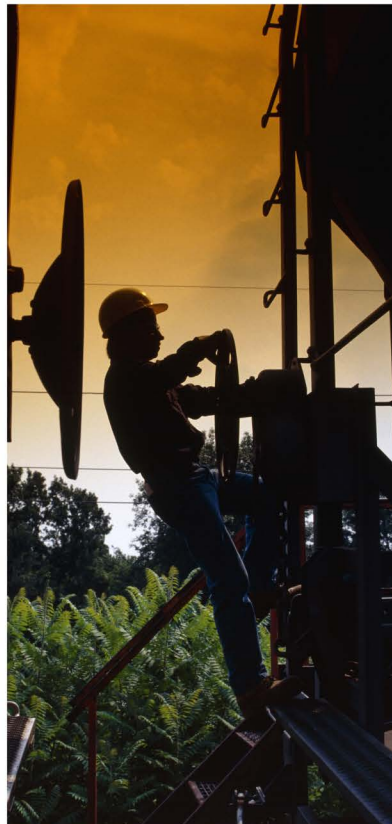


CS100

Professional Two-way Radio

Key Feature

- IP65 Water Resistance & Dust Protection
- Wide Band Frequencies: 400-470 MHz
- CTCSS/DCS Scan
- 2Tone, 5Tone, DTMF, MDC1200 Encode
- 2Tone, 5Tone Decode(Optional)
- Voice Annunciation (or Customization)
- Emergency
- 1300mAh(Standard)/1700mAh(Optional) Li-ion Battery



The CS100 is a rugged portable that meets IP-65 Standards for water resistance and dust protection. Signaling includes CTCSS/DCS encode and decode, 2Tone/5Tone/DTMF/MDC1200 encode, PTT ID and emergency. It was designed with some unique features like CTCSS/DCS Scan and Special Emergency mode that will clearly separate it from its closest competitors.

CS100

Professional Two-way Radio



Key Feature

●Water Resistance & Dust Protector

The radio meets the requirements for Ingress Protection Standard IP65. This keeps the radio protected in both very wet and dusty environments.

●Wide Band

Allows the radio to be programmed in a wide frequency range. UHF:400-470MHz

●Signaling

The radio includes a variety of signaling options: 2Tone, 5Tone,DTMF & MDC1200 Signaling system. These signaling systems come with PTT ID, Individual Call, Group Call etc.

●Voice Annunciation

The radio will let you know what channel is selected every time you switch the channel with a voice announcement. There is no need to talk or look at the channel knob on the radios.

The radio can also give you a prompt annunciation such as battery status, Squelch level information etc.

The customer even can make his own language to get a better prompt for the end user.

●CTCSS/DCS Scan

CTCSS Scan can find a RF channel with its CTCSS or DCS. This feature can make CS100 can add to other two way radio group easily.

●Emergency Alarm

In case of an emergency an alarm will be transmitted from the radio when the alarm button is pressed.The radio can also be programmed to send emergency identify number and background voice to others etc.

●PC Tuning

Simplifies maintenance of the radio and tuning of the radio by allowing both to be done via a PC

●VOX

Allows for hand free operation of the radio when the appropriate VOX accessory is attached, or even use a inside VOX function if you wanted.

●Embedded Message & Serial Number

The radio can store both messages and records, for example: maintenance, history or programming records. The electronic serial number makes the unit identifiable even if the radio's tag with the serial number, etc. is lost or removed.

●Powerful Audio Output

A 1W rated audio output ensures a clear audio even in the noisiest of environments.

●Password Protection

A radio password can be designated upon PC programming. This Protects the radio from unauthorized users changing the programming of the radio or accessing information related to the radio.

Specifications

General

Power Supply	7.5V DC \pm 20%
Frequencies-Full Bandsplit	400~470MHz
Number of Channels	16 channels (or Optional 32 Channels)
Channel Spacing	12.5/20/25kHz
PLL Step	2.5/5/6.25kHz
Type of emission	16K0F3E/11K0F3E
Current Drain (Approx.)	TX High <1.5A RX Max. audio <330mA (Internal SP) Standby <70mA
Antenna Impedance	50 Ω
Operating Temperature	-30 $^{\circ}$ C~+ 60 $^{\circ}$ C
Dimensions: H x W x D (mm)	96.5x54x32 With Standard Li-ion battery (1300mAh) 235g (estimate)
Weight: (gm)	With Standard Li-ion battery 12h (1300mAh)
Average Battery Life@5/5/90 Cycle:	

Transmitter

Frequency Stability	2.5ppm
(-30 $^{\circ}$ C to 60 $^{\circ}$ C, 25 $^{\circ}$ C Ref)	
Power Output	1W(L), 2W(M), 4W(H)
Modulation Limiting	\pm 2.5kHz@12.5kHz, \pm 4kHz@20kHz \pm 5kHz@25kHz
FM Hum & Noise	-45dB/-40dB typical (Wide/Narrow)
Conducted/Radiated Emission	-36dBm<1GHz, -30dBm>1GHz
Adjacent Channel Power	-60dB@12.5KHz, -70dB@20/25KHz,
Audio Response (300-3000Hz)	+1~-3dB
Audio Distortion	< 3%
Ext. Microphone Connector	Compatible with MOTO's hole connector (EP450)

Receiver

Sensitivity (12 dB SINAD) EIA	0.28 μ V@12.5KHz
	0.25 μ V@20/25KHz typical
Sensitivity (20 dB SINAD) ETS	0.50 μ V typical
Intermodulation EIA	70dB
Adjacent Channel Selectivity	60dB@12.5KHz, 70dB@20/25KHz
Spurious Rejection	70dB
Rated Audio	1000mW
Audio Distortion @ Rated Audio	3%
Audio Response (300-3000Hz)	+1~-3dB
Conducted Spurious Emission	-57dBm<1GHz -47dBm>1GHz ETS 300 086

Applicable U.S. Military Specifications & IP Rating

Standard	MIL 810F	
	Method	Procedure
Low Pressure	500.4	I, II
High Temperature	501.4	I, II
Low Temperature	502.4	I, II
Temperature Shock	503.4	I
Solar Radiation	505.4	I
Rain Blowing/Drip	506.4	I, III
Humidity	507.4	-
Salt Fog	509.4	-
Dust Blowing	510.4	I
Vibration	514.5	I
Shock	516.5	I, IV
Also meets equivalent MIL-STD-810-C,-D and E		
Ingress Protection Standard		
Dust & Water	IP65 (Dust-protection and water resistant)	

CONNECT SYSTEMS, INC.

TEL: (805) 642-7184 FAX: (805) 642-7271
5321 Derry Ave Suite B, Agoura Hills, CA 91301
email: sales@connectsystems.com