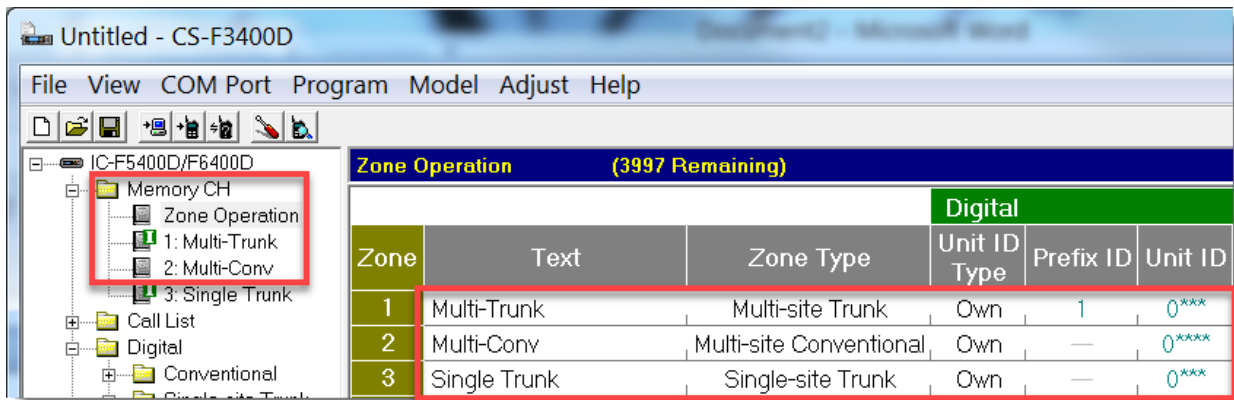


## F3400D Series and F52D Series:

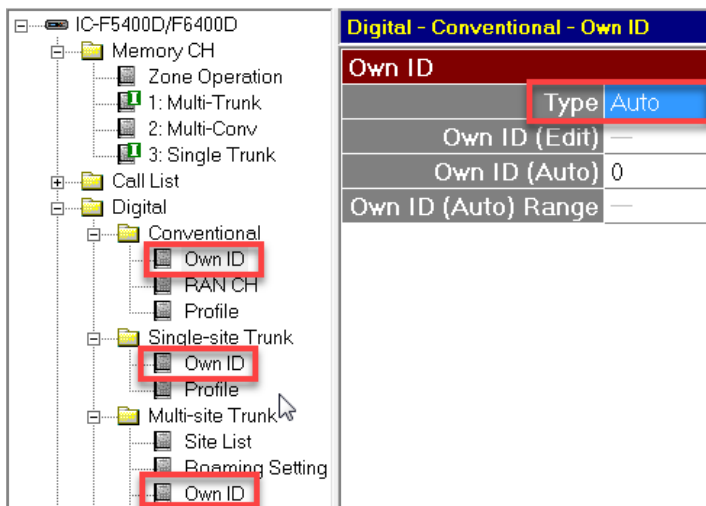
### Programming the Auto Own ID Feature

In an IDAS system, an F3400D or F52D series radio's own ID can be auto-generated in the cloning software. It is based on the radio's serial number. This feature can be used in Single-site Trunking, Multi-site Conventional, and Multi-site Trunking.

1. Go to **Zone Operation** and set **Unit ID Type** to **Own**.



2. Go to **Digital -> Conventional, Single-site Trunk, or Multi-site Trunk)** and set **Own ID/Type** to **Auto**.



**Auto ID Ranges**

Enter an **Own ID (Auto)** number (as above) to set the range of available IDs, depending on the type of system.

Note: the available IDs in the ID Ranges include the **Own ID** number.

**Conventional Mode ID Ranges**

Own ID	ID Ranges
0	1 to 10000 (range may not appear)
1	10001 to 20000
2	20001 to 30000
3	30001 to 40000
4	40001 to 50000
5	50001 to 60000

**Single-Site Mode and Multi-Site Mode ID Ranges**

Own ID	ID Ranges
0	1 to 1000
1	1001 to 2000

**Where to See the Auto ID for Your Radio**

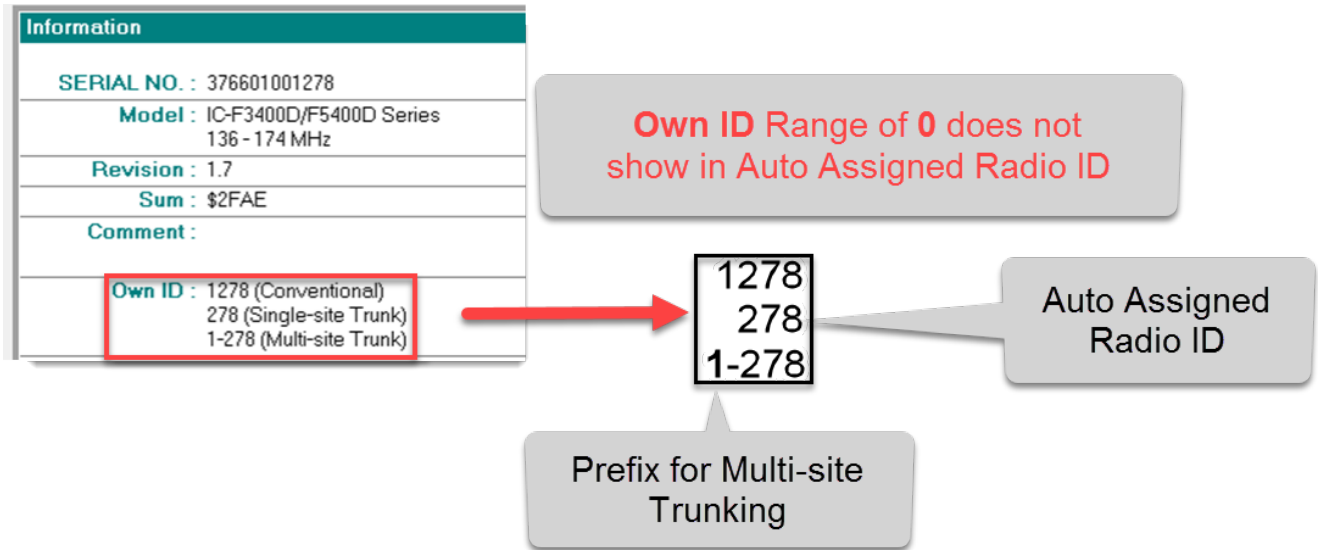
When an auto ID is created, the radio will show the Auto ID number. The Auto ID will appear in Information window as **Own ID** (see below). The Auto ID is the Own ID and the last three or four numbers of the radio serial number, depending on whether the radio is being added to a conventional or trunking system. See the following graphics for more information.

Note: If the Own ID is zero, it will not appear in the Auto ID.

Go to the Main Menu and select **Program -> Information**.

**Example 1:**

With **Own ID (Auto)** set to **0** (to show the ID range), 0 is implied as being in front of the last three or four digits of the radio serial, but will not appear.



**Example 2:**

With **Own ID (Auto)** set to **1** (to show the ID range), 1 will be added in front of the last three or four digits of the radio serial. This number is also part of the ID shown in the Own ID field at the bottom.

