

F4300D/F52D Series Radio Programming

BASIC ANALOG PROGRAMMING: THREE CHANNELS WITH SCANNING

Introduction

This tutorial describes how to program the F3400D/F5400D series and F52D series radios with a basic analog file composed of 3 analog channels with Scanning.

No signaling is programmed in the following procedure.

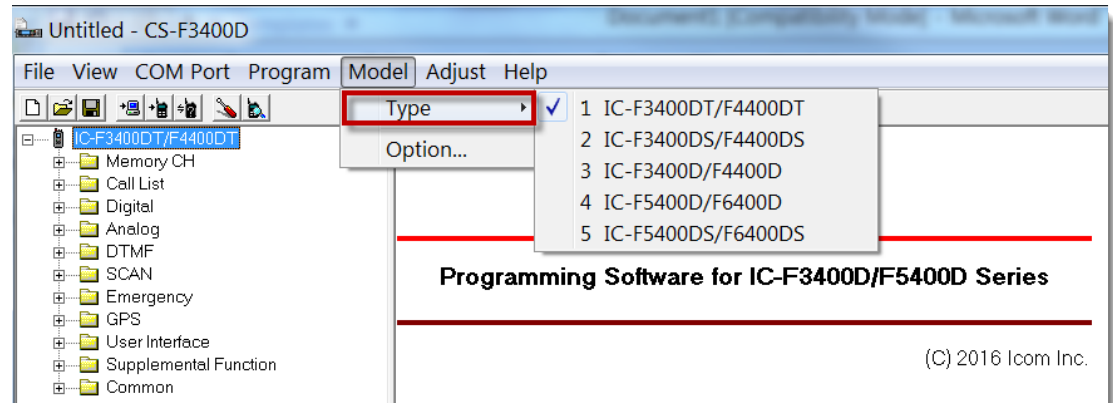
Prerequisites

- Radio is connected to the computer with a cloning cable. USB A to micro B type, with matching driver or OPC-1862 (portables) or OPC- 2363 (Mobiles) with matching drivers
- Firmware and Software are updated to the latest version
- Windows® 7, 8.1, or 10 (32/64bit) operating system

Programming

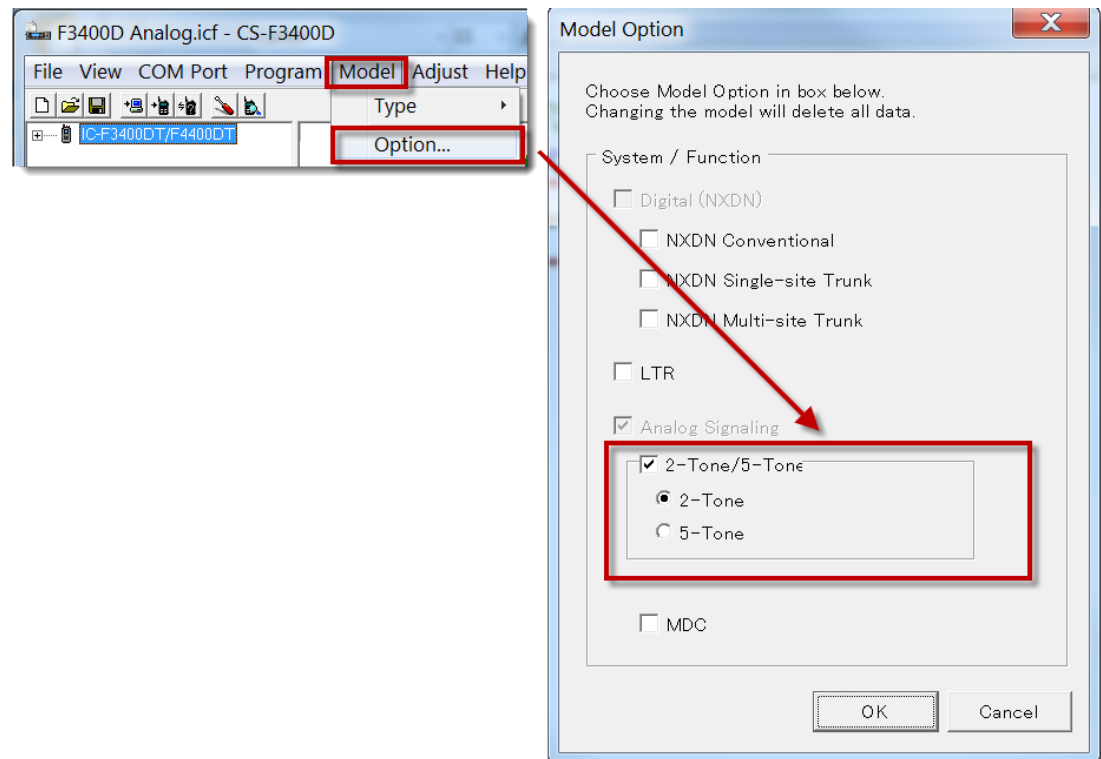
Note: There is no Model Type option (step 2) for the F52D series radios.

1. Open the CS-F3400D software.



2. Click **Model** -> **Type** and select your model radio.

3. Click **Model** -> **Option** and select your feature options in the **Model Option** window.



Zone Operation Window

1. Go to the Zone Operation window.

Zone	Text	Zone Type	TOT	RF PWR	PWR Save
1	Analog Zone 1	Conventional	ON	—	Short
2	Zone 2	Conventional	ON	—	Short
3	Zone 3	Conventional	ON	—	Short

Zone 1 Window

2. Go to Zone 1.

CH	Atr	Inh	Text	CH Type	Frequency (MHz)			C.Tone		
					RX	TX	TX Inh	RX	TX	R PWR
1- 1	AB		Fire Repeater	Analog	454.000000	459.000000		67.0	<-	H
1- 2			Police Repeat	Analog	457.000000	463.000000		67.0	<-	H
1- 3			Fire Talkaroun	Analog	454.000000	<-		67.0	<-	H

3. Enter your RX and TX (if applicable) frequencies.
4. At **C.Tone**, Select a sub-audible tone, (CTCSS or DTCS) for each channel.
5. Assign the **CH Type** as **Analog** for each channel.
6. Enter a text name for each channel.
7. In Scan List, Assign each channel as "1". The **1** points to the **Scan List** window (following).

CH	Analog Profile	Scan List			
		Scan List	Inc	Assign	Sel Inh
1- 1	1:	1	Inc	—	—
1- 2	1:	1	Inc	—	—
1- 3	1:	1	Inc	—	—

8. Assign the characteristics desired for this scan group. Note: Turn all unused **Scan List** groups to **Scan OFF**.

Scan List Window

List	Display Text	Scan Type	Primary CH	Secondary CH	TX CH	Talk Back	TX Action	Cancel CH	Text	PWR Save
1	SCAN1	Normal			Last		Cancel	TX CH		Short
2	SCAN2	Scan OFF								Short
3	SCAN3	Scan OFF								Short
4	SCAN4	Scan OFF								Short

User Interface/key Assign Window

9. Go to the **Key Assign/Key** window and double-click **P1** to bring up the Key window.

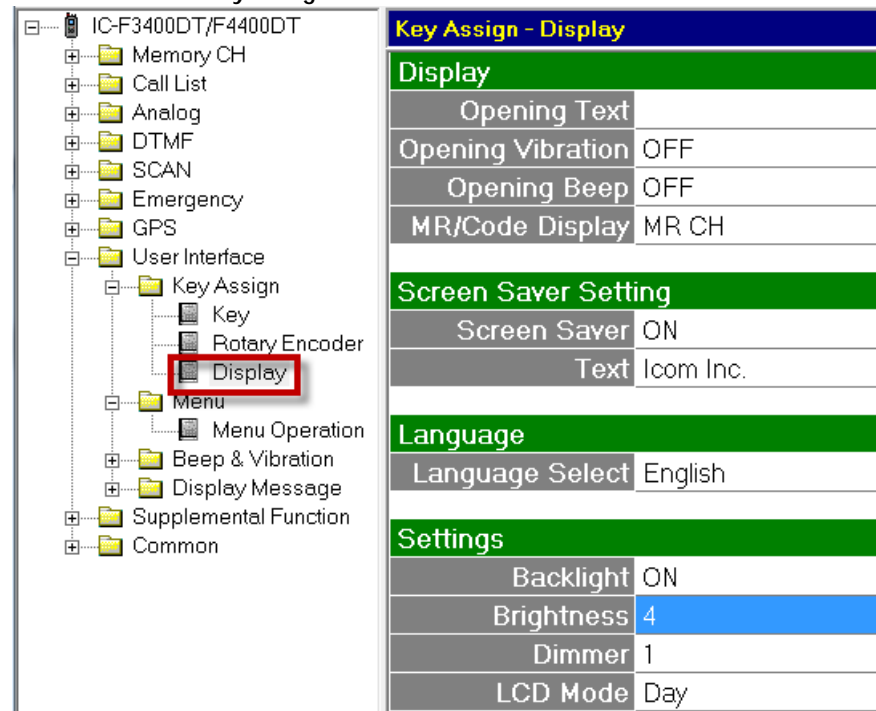
10. Double-click P1 again to bring up the key menu and select **Channel/Scan** from the menu.

11. Select **Scan/Start/Stop** from the **Channel/Scan** menu to assign This function to P1

All other keys can be set to **Null** to avoid confusion.

- CH Up
- CH Down
- Prio-A
- Prio-B
- Prio A (Rewrite)
- Prio B (Rewrite)
- Zone Up
- Zone Down
- Zone Select
- Scan Start/Stop**
- Scan Add/Del (Tag)
- High/Low
- C.Tone CH Select
- Tone/RAN CH Select
- Monitor
- Talk Around
- Bandwidth
- Scrambler/Encryption
- Compander

User Interface/Key Assign window



Key Assign - Display	
Display	
Opening Text	
Opening Vibration	OFF
Opening Beep	OFF
MR/Code Display	MR CH
Screen Saver Setting	
Screen Saver	ON
Text	Icom Inc.
Language	
Language Select	English
Settings	
Backlight	ON
Brightness	4
Dimmer	1
LCD Mode	Day

Suggested Settings:

- **Backlight**- Set to User preference.: When display light is lit up, battery life will be decreased.
- **Auto**- Display lights up after any button push, but then dims (to “Dimmer” level) after 3 seconds.
- **Brightness**- Suggested “4”.
- **Dimmer**- Suggested “0” for portables. Suggested “4” for mobiles.

Menu Operation window

Since functionality for this simple file requires no radio Display use, all menu views are turned off in this example.

Menu Operation				
Category List				
No.	English	Other	Icon	Sel
1	---	---	---	OFF
2	---	---	---	OFF
3	---	---	---	OFF
4	---	---	---	OFF
5	---	---	---	OFF
6	---	---	---	OFF
7	---	---	---	OFF
8	---	---	---	OFF
9	---	---	---	OFF